

INSTRUCTIONS FOR ORDERING PARTS

All service parts should be ordered through your authorized H & S dealer. They will be able to give you faster service if you will provide them with the following

1. Model & Serial number is located on the front, right main frame near pole pivot of your unit.
2. All reference to left or right apply to the machine as viewed from the rear.
3. Parts should not be ordered from illustration only. Please order by complete part number.
4. If your dealer has to order parts - give shipping instructions:
VIA truck - large pieces (please specify local truck lines)
VIA United Parcel Service (include full address)

H&S MFG. CO. INC.	
MARSHFIELD, WIS.	
MOD. NO.	<input type="text"/>
SER. NO.	<input type="text"/>
DESCR.	<input type="text"/>

PLEASE RECORD NUMBERS FOR YOUR UNIT FOR QUICK REFERENCE

ABOUT IMPROVEMENTS

H&S IS CONTINUALLY STRIVING TO IMPROVE IT'S PRODUCTS

We must therefore, reserve the right to make improvements or changes whenever it becomes practical to do so without incurring any obligation to make changes or additions to the equipment previously sold.

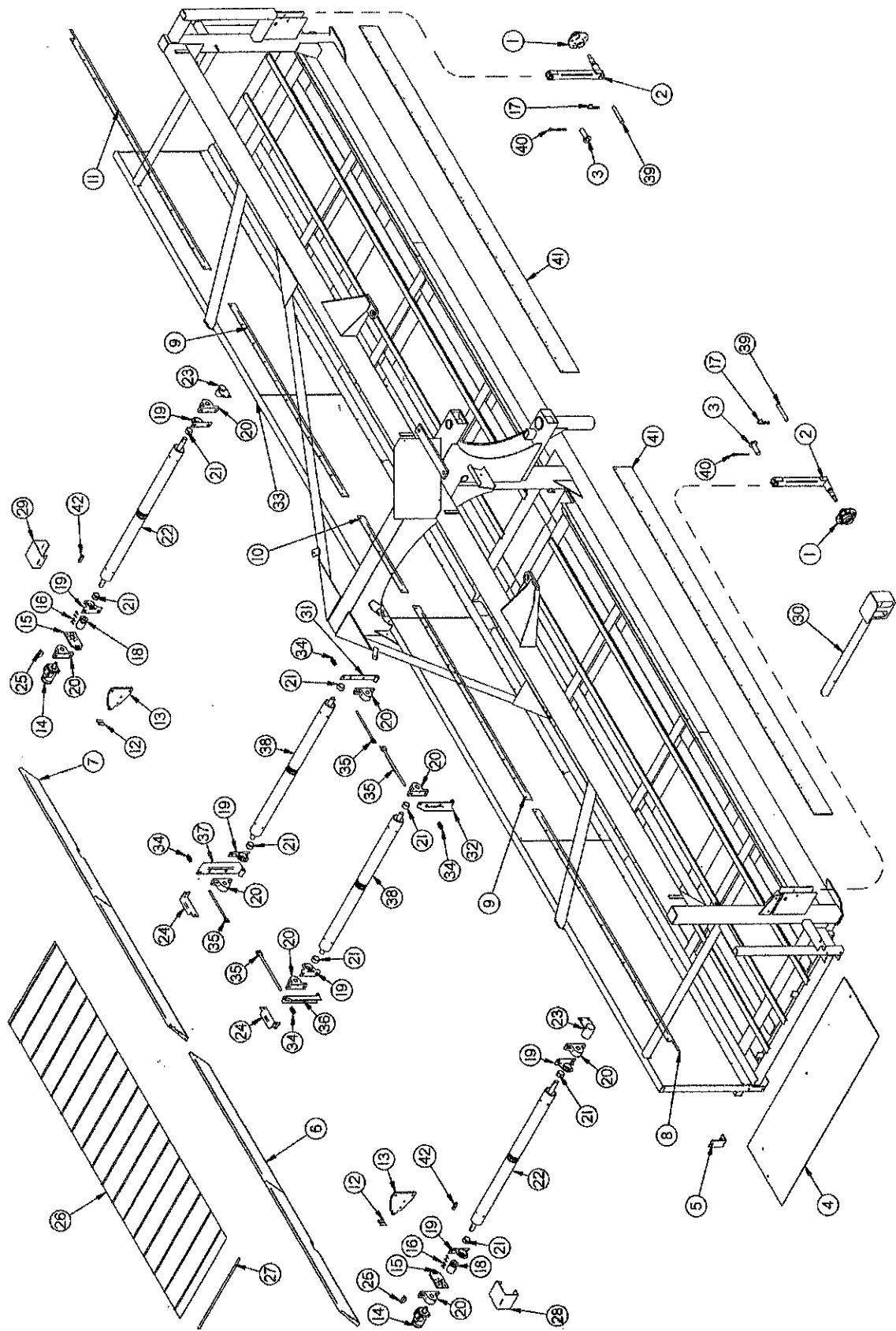


FIGURE 1
H&S 9' & 12' TWIN MERGER
MAIN FRAME

ITEM	PART NO.	DESCRIPTION	ITEM	PART NO.	DESCRIPTION
1.	SHM17	Frame Gauge Wheel Hub	16.	DWM137	Cap Screw - Coupler
*	CAT5	Seal	17.	ES7	Hair Pin
*	CAT6	Inner Bearing	18.	DWM27	Coupler
*	CAT7	Inner Race	19.	DWM36	Anti-Wrap Guard
*	CAT128A	Stud Bolt	20.	DWM132	Bearing (Pillow Block)
*	CAT14	Stud Nut	21.	DWM57	Spacers
*	CAT9	Outer Race	22.	DWM14	Drive Roller
*	CAT10	Outer Bearing	23.	DWM31	Shaft Shield
*	BFR63	Washer	24.	DWM379	Bearing Bracket
*	T35	Slotted Nut	25.	5B10	1/4" x 1" Woodruff Key
*	CAT13	Hub Cap	26.	DWM160	Cross Conveyor Belt
*	CAT166	18.5 x 8.50 x 8 Tire	*	DWM318	Repair Dutchman
*	CAT211	8 x 7 (5 Bolt) Wheel	27.	DWM161	Cross Conveyor Lacing Pin
*	BFR65	Cotter Key	*	DWM162	Cross Conveyor Lacing
2.	DWM411	Frame Gauge Wheel Arm	28.	DWM42	Right Motor Shield
3.	DWM409	Frame Gauge Wheel Arm Pin	29.	DWM41	Left Motor Shield
4.	DWM408	Hay Deflector	30.	DWM341	Right Rear Light Bracket
5.	DWM410	Hay Deflector Bracket	31.	DWM23	Front Left Tightener
6.	DWM387	RH Wind Guard	32.	DWM24	Front Right Tightener
7.	DWM386	LH Wind Guard	33.	DWM22	Frame
8.	DWM335	Skirt RH	34.	DWM232	Spring (Blue)
9.	DWM46	Short Skirt	35.	DWM231	Tightener
10.	DWM47	Middle Skirt	36.	DWM377	RH Tightener Arm
11.	DWM334	Skirt LH	37.	DWM378	LH Tightener Arm
12.	DWM45	Motor Spacer	38.	DWM13	Conveyor Roller
13.	DWM51	Male Torque Arm	39.	DWM430	1/2" x 3-1/2" Clevis Pin
14.	DF1	Hydraulic Motor (101-2970)	40.	R70	3/16" x 2" Cotter Pin
*	WM225	Seal Kit	41.	DWM350	Poly Skirt
15.	DWM39	Torque Arm	42.	G23	5/16" x 1-3/8" Key

NOTE: * (MEANS NOT SHOWN)

FIGURE 2

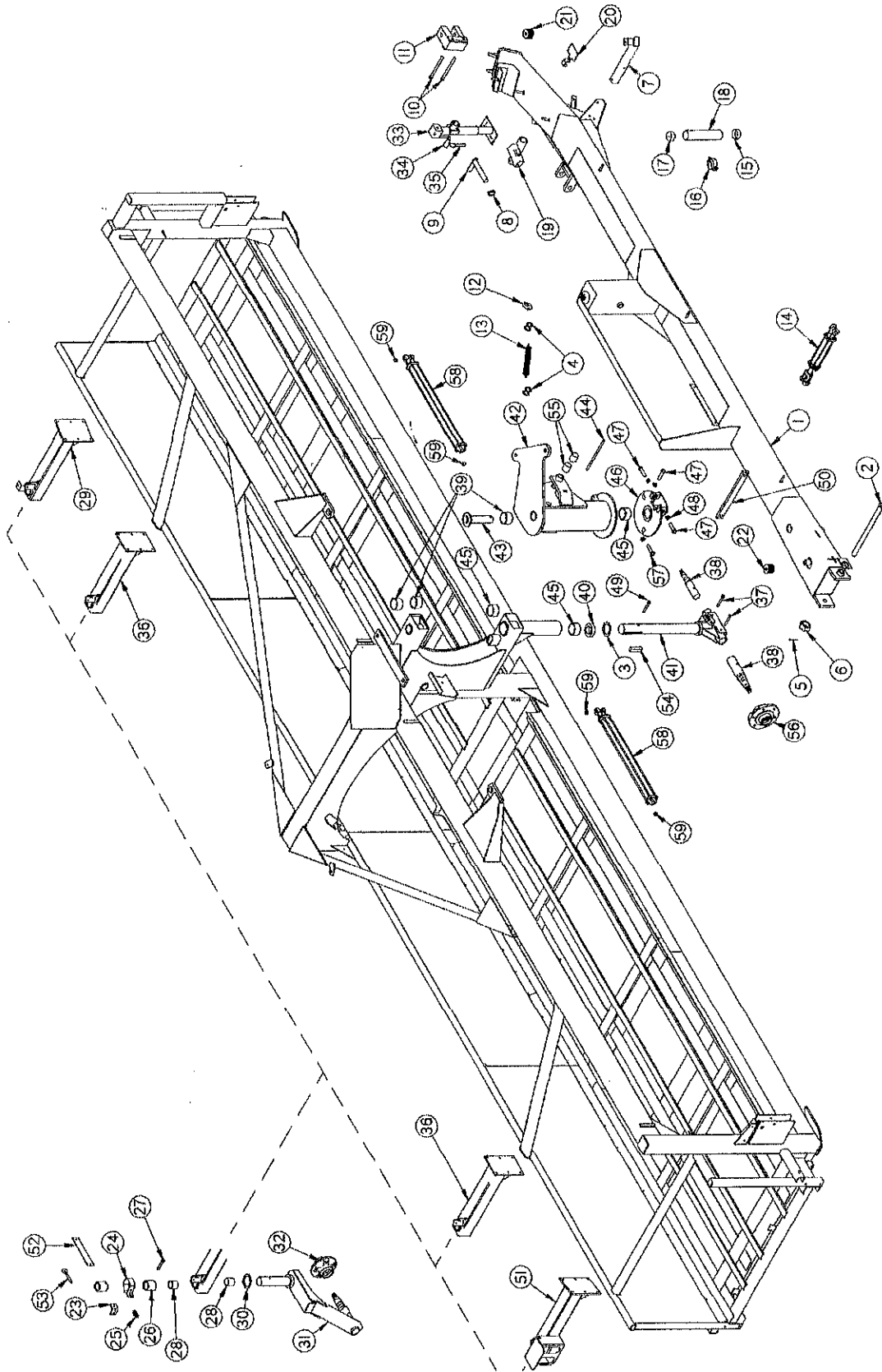
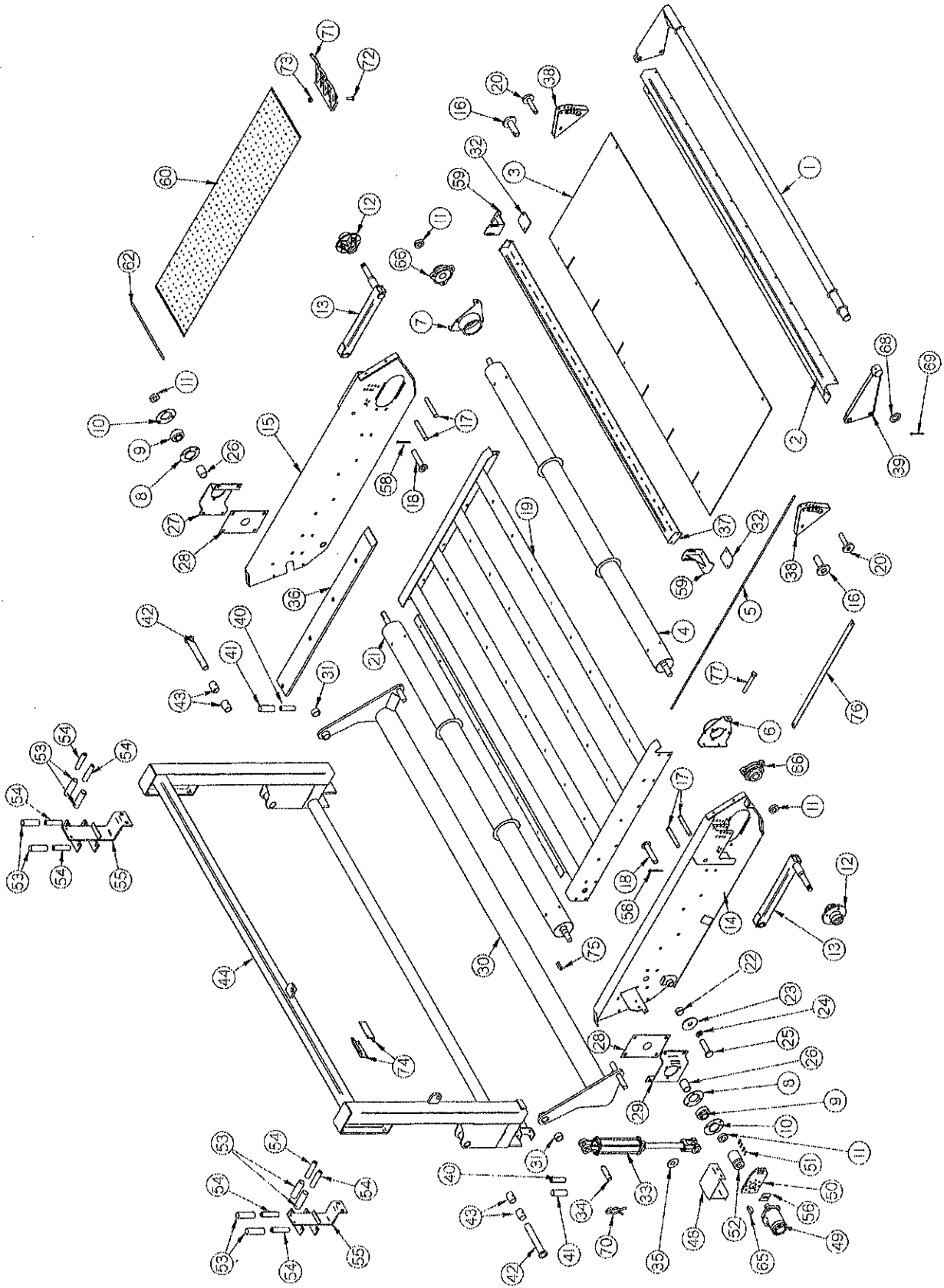


FIGURE 2
H&S 9' & 12' TWIN MERGER
MAIN FRAME (Continued)

ITEM	PART NO.	DESCRIPTION	ITEM	PART NO.	DESCRIPTION
1.	DWM337	Pole	*	DWM164	11Lx15 HD Front Tire
2.	DWM33	Pole Pin	*	12N24	Wheel (Front & Rear)
3.	DWM73	Bronze Washer 3" ID	*	DWM163	11Lx15 Rear Tire
4.	F87	S-Hook	*	B3	7/8" Slotted Nut
5.	DWM255	3/16" x 2-1/2" Cotter Key	*	B31	5/32" x 1-3/4" Cotter Key
6.	BFR228	1-1/4"-12 Slotted Hex Nut	33.	DWM124	Jack (2000#)
7.	DWM340	Light Bracket	34.	12N12	Jack Handle
8.	F56	Lynch Pin	35.	BFR4	Jack Pin & Chain
9.	DWM34	Pole Lock Pin	36.	SWM3	Caster Mount
10.	50N129	3/4" x 6" Bolt GR. 5	37.	DWM172	3/8" x 3-1/2" Bolt GR. 5
11.	WM43	Hitch - Adjustable	38.	DWM252	Spindle
12.	DWM331	Spring Clip	39.	RG26	Bushing (Steel)
13.	K103	Spring	40.	DWM49	Steel Washer
14.	T188A	Cylinder	41.	DWM352	Steering Fork
15.	S418	Cap w/Hole	42.	DWM16	Steering Pivot
16.	S416	Hanger Bracket	43.	DWM18	Steering Pin
17.	S414	Cap	44.	DWM72	Bolt (Ready Rod)
18.	S415	Tube	45.	B58	Bushing (Phenolic)
19.	DWM338	Pump Storage Bracket	46.	DWM17	Steering Flange
20.	DWM366	Module Holder	47.	DWM168	3/4" x 4" Bolt Full Thread GR. 5
21.	DWM159	3/4" Black Pipe Plug	48.	DWM169	3/4" Coarse Thread Jam Nut
22.	DWM158	1" Black Pipe Plug	49.	DWM170	3/8" x 5" Bolt GR. 5
23.	WM211	Brake Angle	50.	DWM353	Lift Bar
24.	WM286	Brake Band	51.	DWM254	Right Tail Wheel
25.	WM210	Spring (Red)	52.	WM288	Brake Pad
26.	DWM59	Brake Bushing	53.	WM287	I-Bolt
27.	BFR313	5/16" x 2-3/4" Roll Pin	54.	DWM126	1/2"x2-1/2" Sq.Key w/Round Ends
28.	BFR527	2"ID x 2-1/4"OD x 2" Bushing	55.	RG132	1-1/4"ID x 2" Bushing
29.	DWM253	Left Tail Wheel	56.	DWM394	Hub
30.	RG24	2"IDx3"ODx1/8" Bronze Washer	*	17G151	Seal
31.	DWM26	Casters	*	RG172	Inner Bearing -Timkin
32.	RG101	Hub - Road Wheels	*	RG148	Inner Race-Timkin
*	RG98	Seal	*	17G147	Hub Bolt
*	RG99	Inner Bearing	*	RG47	Outer Race - Timkin
*	RG100	Inner Race	*	RG45	Outer Bearing - Timkin
*	RG102	Stud Bolt	*	DWM121	Washer (Hardened)
*	BFR144	Nut	*	B31	Cotter Pin
*	RG47	Outer Race	*	B3	Nut
*	RG48	Outer Bearing	*	17G144	Hub Cap
*	DWM121	Washer (Hardened)	57.	DWM173	3/4"x2-1/2" Full Thread Bolt GR. 5
*	RG103	Hub Cap	58.	DWM406	3-1/2" x 30" Cylinder
			59.	DWM141	Spacer 1/2"

NOTE: * (MEANS NOT SHOWN)

FIGURE 3



**FIGURE 3
H&S 9' TWIN MERGER
LEFT PICK-UP HEAD**

ITEM	PART NO.	DESCRIPTION	ITEM	PART NO.	DESCRIPTION
1.**	DWM333	Wind Guard	31.	DWM57	Spacer
2.**	DWM2	Double Wind Guard	32.**	DWM368	Wind Guard Poly
3.**	DWM351	Poly Wind Guard	33.	BFR69A	Hydraulic Cylinder
4.	WM342	Front Idler Roller	34.	T143	Cylinder Pin
5.**	DWM349	Wind Guard Rods	35.	16SV136	Washer
6.	WM179	Right Roller Adjustment Bracket	36.	DWM358	Slides
7.	WM192	Left Roller Adjustment Bracket	37.	DWM355	Poly Support
8.	F145	Flange	38.**	DWM374	Wind Guard Bracket
9.	WM29	Bearing	39.**	DWM332	Right Wind Guard Side
10.	F143	Flange (Greaseable)	40.	DWM55	Short Slider Spacer
11.	WM27	1-1/4" Lock Collar w/Set Screw	41.	DWM67	Short Back Slider Roller
12.	CAT177	Hub - Complete	42.	DWM21	Head Pin
*	CAT135A	Seal	43.	RG132	1-1/4"ID x 2" Bushing
*	CAT10	Bearing (2)	44.	DWM375	Left Head Slide
*	CAT9	Race (2)	48.	DWM43	Left Head Shield
*	CAT136A	Hub w/Races	49.	DWM84	Hydraulic Motor (101-3048)
*	CAT128	Stud	*	WM225	Seal Kit
*	BFR144	Lug Nut	50.	DWM39	Hydraulic Motor Mount
*	BFR65	Cotter Pin	51.	DWM137	Cap Screw - Coupler
*	CAT13	Hub Cap	52.	DWM27	Coupler
*	CAT211	8 x 7 Wheel (5-Bolt)	53.	DWM66	Back Slider Roller
*	CAT166	18.5 x 8.5 x 8 Tire	54.	DWM54	Slider Spacer
*	CAT12	Spindle Nut	55.	DWM32	Hanger Slide
*	CAT52	Tire/Wheel Assembly	56.	DWM45	Motor Spacer
13.	DWM229	Gauge Arms	58.	R70	3/16" x 2" Cotter Pin
14.	DWM344	Left Head - Right Panel	59.**	DWM385	Poly Brackets
15.	DWM345	Left Head - Left Panel	60.	DWM359A	Pick-up Belt Section
16.**	DWM347	Wind Guard Pivot Pin	*	DWM364A	Complete Belt w/Teeth & Pin
17.	DWM127	1/2" x 5" Clevis Pins	*	DWM367	Repair Dutchman Assembly
18.	DWM7	Pivot Pin	*	DWM373	Complete Dutchman Repair Kit
19.	DWM339	Z-Channel Frame			w/Nuts, Bolts and Clips
20.**	DWM348	Wind Guard Adjustment Pins	62.	SWM41	Lacing Pin
21.	WM341	Head Drive Roller	65.	5B10	1/4" x 1" Woodruff Key
22.	WM183	Pivot Bushing	66.	SWM35	3-Bolt Bearing Assembly
23.	WM218	Washer	68.**	DWM227	Wind Guard Washer
24.	DWM171	1" Lock Washer	69.**	SWM55	1/4" x 2-1/2" Cotter Pin
25.	DWM177	1" x 2-1/2" Bolt Full Thread GR.	70.	T144	Clip Pins
26.	WM343	Spacer PVC	71.	SWM1	Pick-up Tooth
27.	WM186	Bearing Bracket LH	72.	SWM26	Bolt
28.	WM180	Side Panel Slot Plate	73.	SWM27	Nut
29.	WM187	Bearing Bracket RH	74.	DWM380	Cylinder Stop
30.	DWM10	Left Pick-up Lifter	75.	G23	5/16" x 1-3/8" Key
			76.**	DWM412	Wind Guard Strap

NOTE: * (MEANS NOT USED)

** (MEANS USED ON 2007 & PRIOR MODELS ONLY)

FIGURE 4

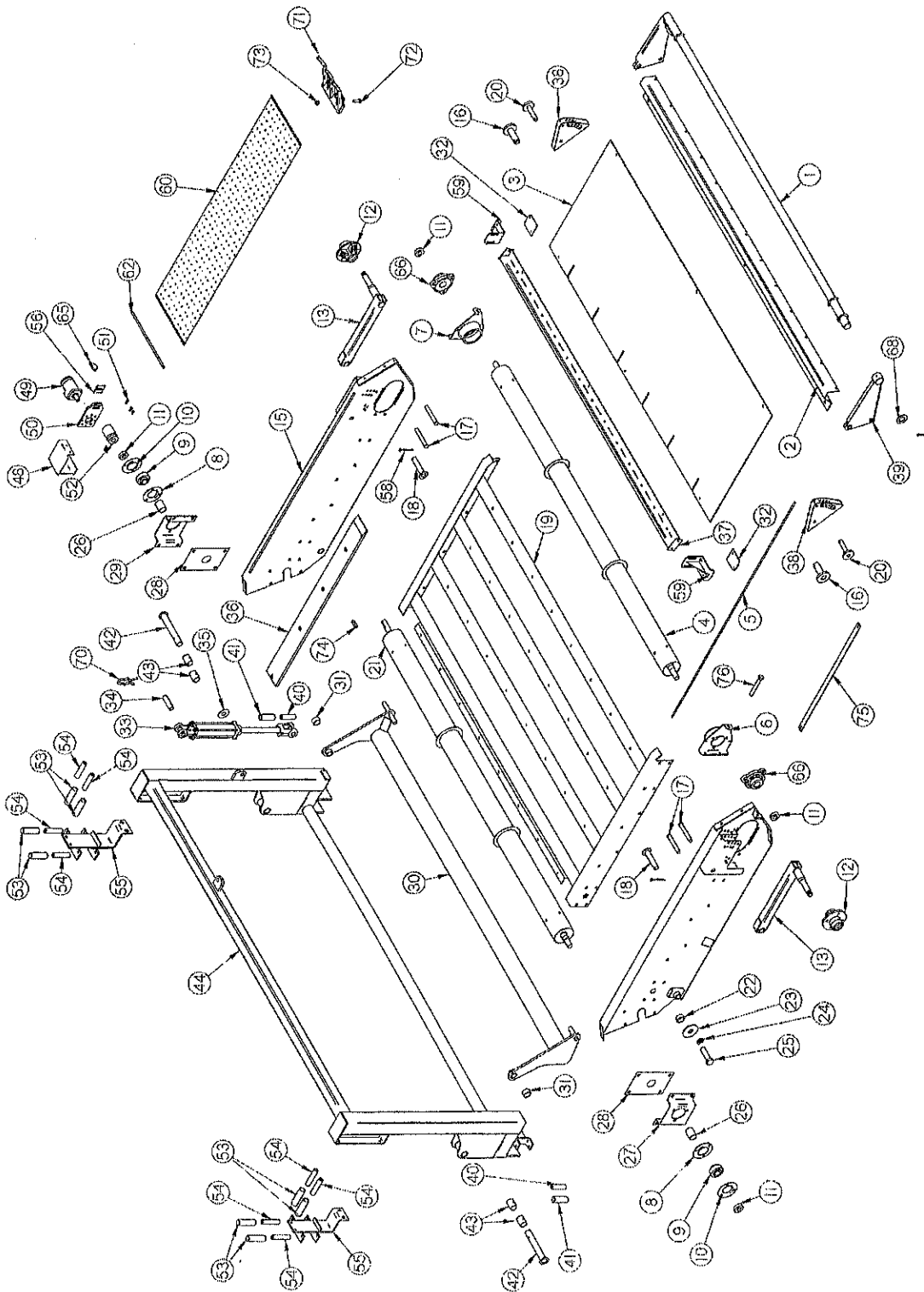


FIGURE 4
H&S 9' TWIN MERGER
RIGHT PICK-UP HEAD

ITEM	PART NO.	DESCRIPTION	ITEM	PART NO.	DESCRIPTION
1.**	DWM333	Wind Guard	31.	DWM57	Spacer
2.**	DWM2	Double Wind Guard	32.**	DWM368	Wind Guard Poly
3.**	DWM351	Poly Wind Guard	33.	BFR69A	Hydraulic Cylinder
4.	WM342	Front Idler Roller	34.	T143	Cylinder Pin
5.**	DWM349	Wind Guard Rods	35.	16SV136	Washer
6.	WM179	Right Roller Adjustment Bracket	36.	DWM358	Slides
7.	WM192	Left Roller Adjustment Bracket	37.**	DWM355	Poly Support
8.	F145	Flange	38.**	DWM374	Wind Guard Bracket
9.	WM29	Bearing	39.**	DWM332	Right Wind Guard Side
10.	F143	Flange (Greaseable)	40.	DWM55	Short Slider Spacer
11.	WM27	1-1/4" Lock Collar w/Set Screw	41.	DWM67	Short Back Slider Roller
12.	CAT177	Hub - Complete	42.	DWM21	Head Pin
*	CAT135A	Seal	43.	RG132	1-1/4"ID x 2" Bushing
*	CAT10	Bearing (2)	44.	DWM376	Right Head Slide
*	CAT9	Race (2)	48.	DWM40	Right Head Shield
*	CAT136A	Hub w/Races	49.	DWM84	Hydraulic Motor (101-3048)
*	CAT128	Stud	*	WM225	Seal Kit
*	BFR144	Lug Nut	50.	DWM39	Hydraulic Motor Mount
*	BFR65	Cotter Pin	51.	DWM137	Cap Screw - Coupler
*	CAT13	Hub Cap	52.	DWM27	Coupler
*	CAT211	8 x 7 Wheel (5-Bolt)	53.	DWM66	Back Slider Roller
*	CAT166	18.5 x 8.5 x 8 Tire	54.	DWM54	Slider Spacer
*	CAT12	Spindle Nut	55.	DWM32	Hanger Slide
*	CAT52	Tire/Wheel Assembly	56.	DWM45	Motor Spacer
13.	DWM229	Gauge Arms	58.	R70	3/16" x 2" Cotter Pin
14.	DWM342	Right Head - Right Panel	59.**	DWM385	Poly Brackets
15.	DWM343	Right Head - Left Panel	60.	DWM359A	Pick-up Belt Section
16.**	DWM347	Wind Guard Pivot Pin	*	DWM364A	Complete Belt w/Teeth & Pin
17.	DWM127	1/2" x 5" Clevis Pins	*	DWM367	Repair Dutchman Assembly
18.	DWM7	Pivot Pin	*	DWM373	Complete Dutchman Repair Kit
19.	DWM339	Z-Channel Frame			w/Nuts, Bolts and Clips
20.**	DWM348	Wind Guard Adjustment Pins	62.	SWM41	Lacing Pin
21.	WM341	Head Drive Roller	65.	5B10	1/4" x 1" Woodruff Key
22.	WM183	Pivot Bushing	66.	SWM35	3-Bolt Bearing Assembly
23.	WM218	Washer	68.**	DWM227	Wind Guard Washer
24.	DWM171	1" Lock Washer	69.	SWM55	1/4" x 2-1/2" Cotter Pin
25.	DWM177	1" x 2-1/2" Bolt Full Thread GR. 5	70.	T144	Clip Pins
26.	WM343	Spacer PVC	71.	SWM1	Pick-up Tooth
27.	WM187	Bearing Bracket RH	72.	SWM26	Bolt
28.	WM180	Side Panel Slot Plate	73.	SWM27	Nut
29.	WM186	Bearing Bracket LH	74.	G23	5/16" x 1-3/8" Key
30.	DWM9	Right Pick-up Lifter	75.**	DWM412	Wind Guard Strap

NOTE: * (MEANS NOT SHOWN)

**** (MEANS USED ON 2007 & PRIOR MODELS ONLY)**

FIGURE 5

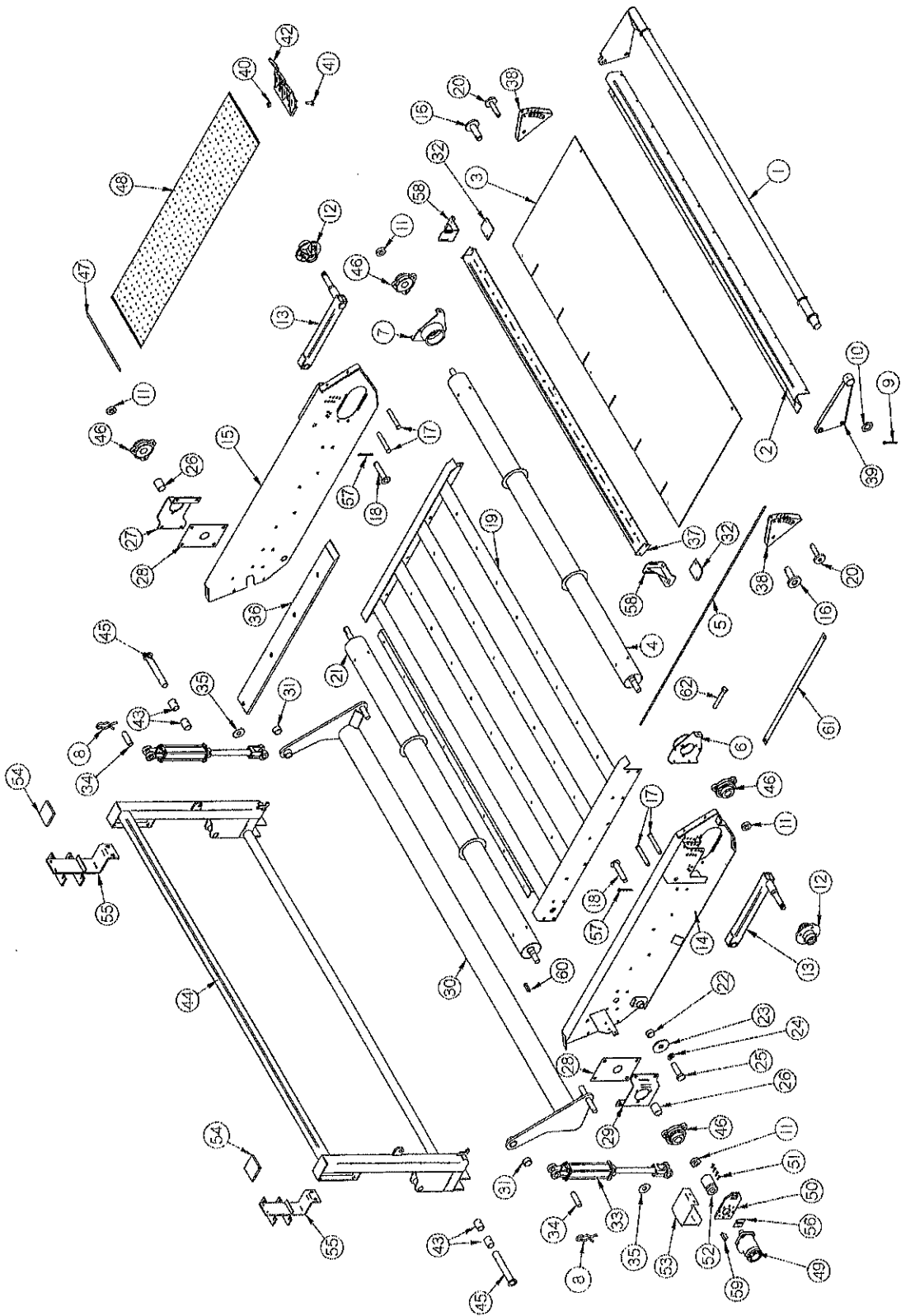


FIGURE 6

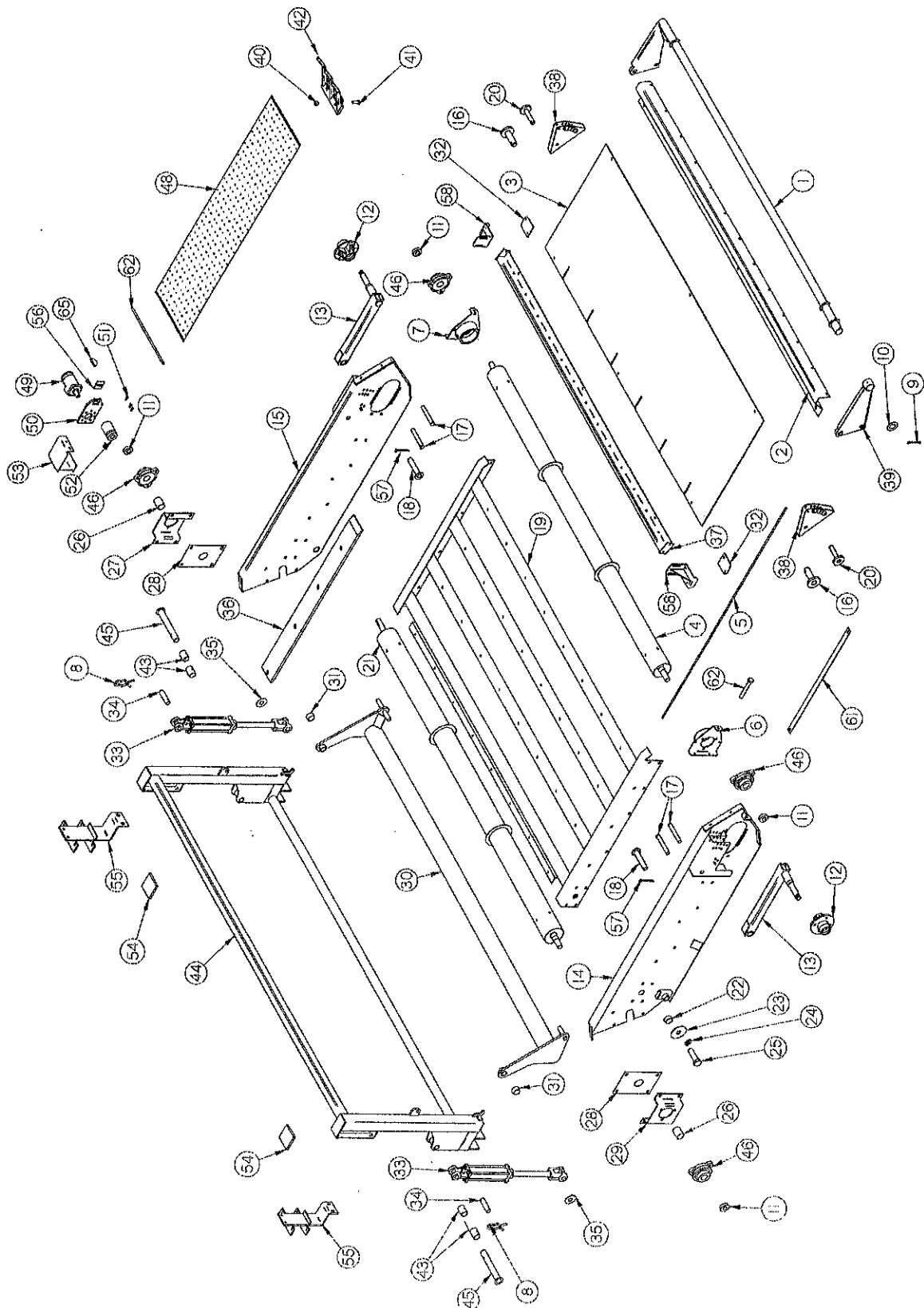


FIGURE 5
H&S 12' TWIN MERGER
LEFT PICK-UP HEAD

ITEM	PART NO.	DESCRIPTION	ITEM	PART NO.	DESCRIPTION
1.	SHM3**	Wind Guard	27.	SHM12	Bearing Bracket LH
2.	SHM9**	Double Wind Guard	28.	WM180	Side Panel Slot Plate
3.	SHM11 **	Poly Wind Guard	29.	SHM13	Bearing Bracket RH
4.	SHM21	Front Idler Roller	30.	SHM8	Pickup Lifter
5.	DWM349**	Wind Guard Rods	31.	DWM57	Spacer
6.	WM179	Right Roller Adjustment Bracket	32.	DWM368**	Wind Guard Poly
7.	WM192	Left Roller Adjustment Bracket	33.	BFR69A	Hydraulic Cylinder
8.	T144	Clip Pins	34.	T143	Cylinder Pin
9.	SWM55**	1/4" x 2-1/2" Cotter Pin	35.	16SV136	Washer
10.	DWM227**	Wind Guard Washer	36.	DWM358	Slides
11.	WM27	1-1/4" Lock Collar w/Set Screw	37.	SHM2**	Poly Support
12.	CAT177	Hub - Complete	38.	DWM374**	Wind Guard Bracket
*	CAT135A	Seal	39.	DWM332**	Right Wind Guard Side
*	CAT10	Bearing (2)	40.	SWM27	Nut
*	CAT9	Race (2)	41.	SWM26	Bolt
*	CAT136A	Hub w/Races	42.	SWM1	Pickup Tooth
*	CAT128	Stud	43.	RG132	1-1/4"ID x 2" Bushing
*	BFR144	Lug Nut	44.	SHM7	Head Mount
*	BFR65	Cotter Pin	45.	DWM21	Head Pin
*	CAT13	Hub Cap	46.	SWM35	3-Bolt Bearing Assembly
*	CAT211	8 x 7 Wheel (5-Bolt)	47.	SWM41	Lacing Pin
*	CAT166	18.5 x 8.5 x 8 Tire	48.	DWM359A	Pickup Belt Section
*	CAT12	Spindle Nut	*	DWM364A	Complete Belt w/Teeth & Pin
*	CAT52	Tire/Wheel Assembly	*	DWM367	Repair Dutchman Assembly
13.	DWM229	Gauge Arms	*	DWM373	Complete Dutchman Repair Kit
14.	DWM344	Left Head - Right Panel			w/Nuts, Bolts and Clips
15.	DWM345	Left Head - Left Panel	49.	DWM84	Hydraulic Motor (101-3048)
16.	DWM347**	Wind Guard Pivot Pin	*	WM225	Seal Kit
17.	DWM127	1/2" x 5" Clevis Pins	50.	DWM39	Hydraulic Motor Mount
18.	DWM7	Pivot Pin	51.	DWM137	Cap Screw - Coupler
19.	SHM4	Z-Channel Frame	52.	DWM27	Coupler
20.	DWM348**	Wind Guard Adjustment Pins	53.	DWM43	Left Head Shield
21.	SHM22	Head Drive Roller	54.	SHM10	Head Spacer
22.	WM183	Pivot Bushing	55.	DWM32	Hanger Slide
23.	WM218	Washer	56.	DWM45	Motor Spacer
24.	DWM171	1" Lock Washer	57.	R70	3/16" x 2" Cotter Pin
25.	DWM177	1" x 2-1/2" Bolt Full Thread GR. 5	58.	DWM385**	Poly Brackets
26.	SHM23	Spacer PVC	59.	5B10	1/4" x 1" Woodruff Key
			60.	G23	5/16" x 1-3/8" Key
			61.	DWM412**	Wind Guard Strap
			62.	LW131	1/2 X 3-1/2" Gr. 5 Bolt

NOTE: * (MEANS NOT SHOWN)

**** (MEANS USED ON 2007 & PRIOR MODELS ONLY)**

FIGURE 6
H&S 12' TWIN MERGER
RIGHT PICK-UP HEAD

ITEM	PART NO.	DESCRIPTION	ITEM	PART NO.	DESCRIPTION
1.	SHM3**	Wind Guard	29.	SHM13	Bearing Bracket RH
2.	SHM9**	Double Wind Guard	30.	SHM8	Pick-up Lifter
3.	SHM11**	Poly Wind Guard	31.	DWM57	Spacer
4.	SHM21	Front Idler Roller	32.	DWM368**	Wind Guard Poly
5.	DWM349**	Wind Guard Rods	33.	BFR69A	Hydraulic Cylinder
6.	WM179	Right Roller Adjustment Bracket	34.	T143	Cylinder Pin
7.	WM192	Left Roller Adjustment Bracket	35.	16SV136	Washer
8.	T144	Clip Pins	36.	DWM358	Slides
9.	SWM55**	1/4" x 2-1/2" Cotter Pin	37.	SHM2**	Poly Support
10.	DWM227**	Wind Guard Washer	38.	DWM374**	Wind Guard Bracket
11.	WM27	1-1/4" Lock Collar w/Set Screw	39.	DWM332**	Right Wind Guard Side
12.	CAT177	Hub - Complete	40.	SWM27	Nut
*	CAT135A	Seal	41.	SWM26	Bolt
*	CAT10	Bearing (2)	42.	SWM1	Pickup Tooth
*	CAT9	Race (2)	43.	RG132	1-1/4"ID x 2" Bushing
*	CAT136A	Hub w/Races	44.	SHM7	Head Mount
*	CAT128	Stud	45.	DWM21	Head Pin
*	BFR144	Lug Nut	46.	SWM35	3-Bolt Bearing Assembly
*	BFR65	Cotter Pin	47.	SWM41	Lacing Pin
*	CAT13	Hub Cap	48.	DWM359A	Pickup Belt Section
*	CAT211	8 x 7 Wheel (5-Bolt)	*	DWM364A	Complete Belt w/Teeth & Pin
*	CAT166	18.5 x 8.5 x 8 Tire	*	DWM367	Repair Dutchman Assembly
*	CAT12	Spindle Nut	*	DWM373	Complete Dutchman Repair Kit
*	CAT52	Tire/Wheel Assembly			w/Nuts, Bolts and Clips
13.	DWM229	Gauge Arms	49.	DWM84	Hydraulic Motor (101-3048)
14.	DWM342	Right Head - Right Panel	*	WM225	Seal Kit
15.	DWM343	Right Head - Left Panel	50.	DWM39	Hydraulic Motor Mount
16.	DWM347**	Wind Guard Pivot Pin	51.	DWM137	Cap Screw - Coupler
17.	DWM127	1/2" x 5" Clevis Pins	52.	DWM27	Coupler
18.	DWM7	Pivot Pin	53.	DWM40	Right Head Shield
19.	SHM4	Z-Channel Frame	54.	SHM10	Head Spacer
20.	DWM348**	Wind Guard Adjustment Pins	55.	DWM32	Hanger Slide
21.	SHM22	Head Drive Roller	56.	DWM45	Motor Spacer
22.	WM183	Pivot Bushing	57.	R70	3/16" x 2" Cotter Pin
23.	WM218	Washer	58.	DWM385**	Poly Brackets
24.	DWM171	1" Lock Washer	59.	5B10	1/4" x 1" Woodruff Key
25.	DWM177	1" x 2-1/2" Bolt Full Thread GR. 5	60.	G23	5/16" x 1-3/8" Key
26.	SHM23	Spacer PVC	61.	DWM412**	Wind Guard Strap
27.	SHM12	Bearing Bracket LH	62.	LW131	1/2" x 3-1/2" Gr. 5 Bolt
28.	WM180	Side Panel Slot Plate			

NOTE: * (MEANS NOT SHOWN)

**** (MEANS USED ON 2007 & PRIOR MODELS ONLY)**

FIGURE 7

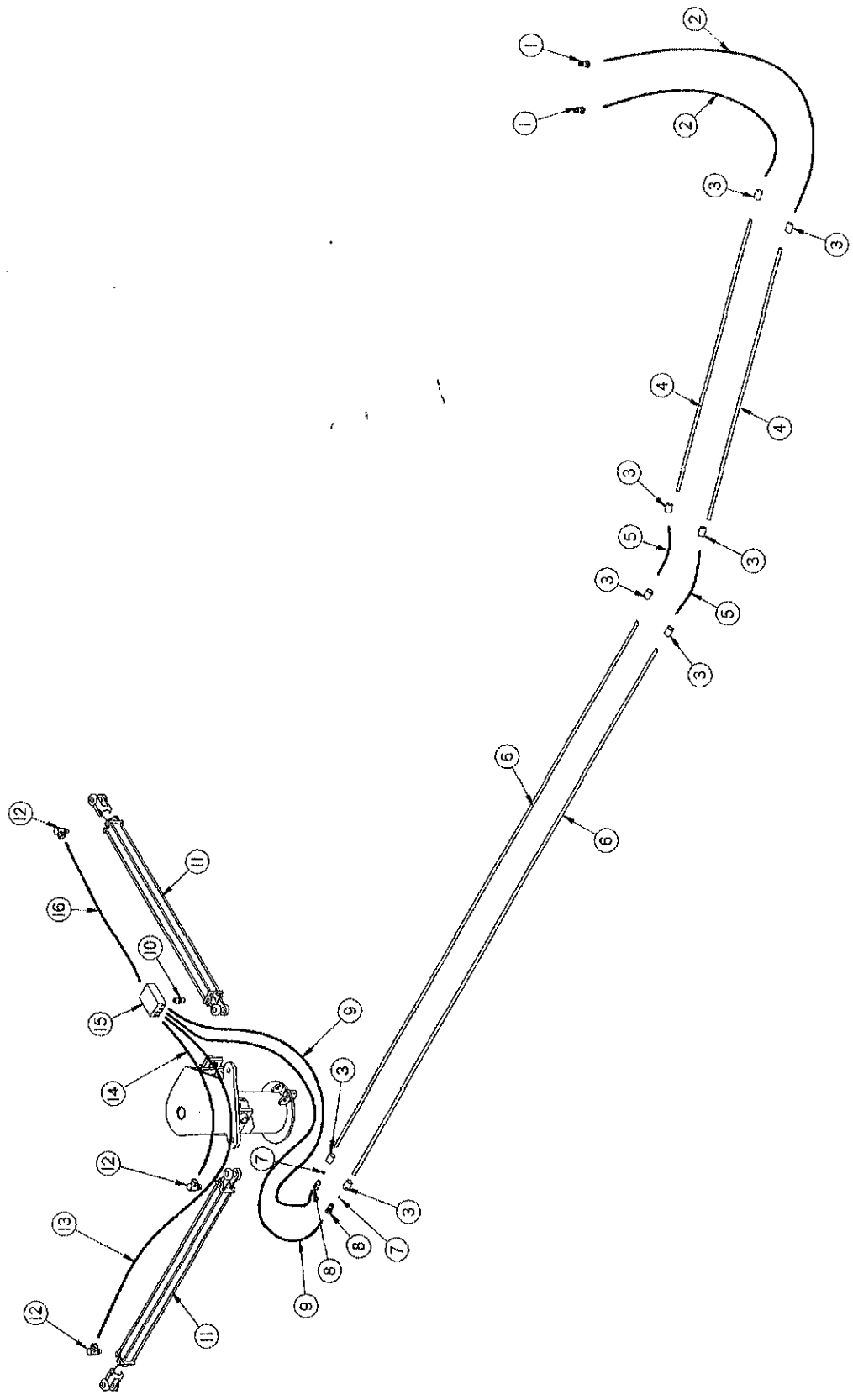
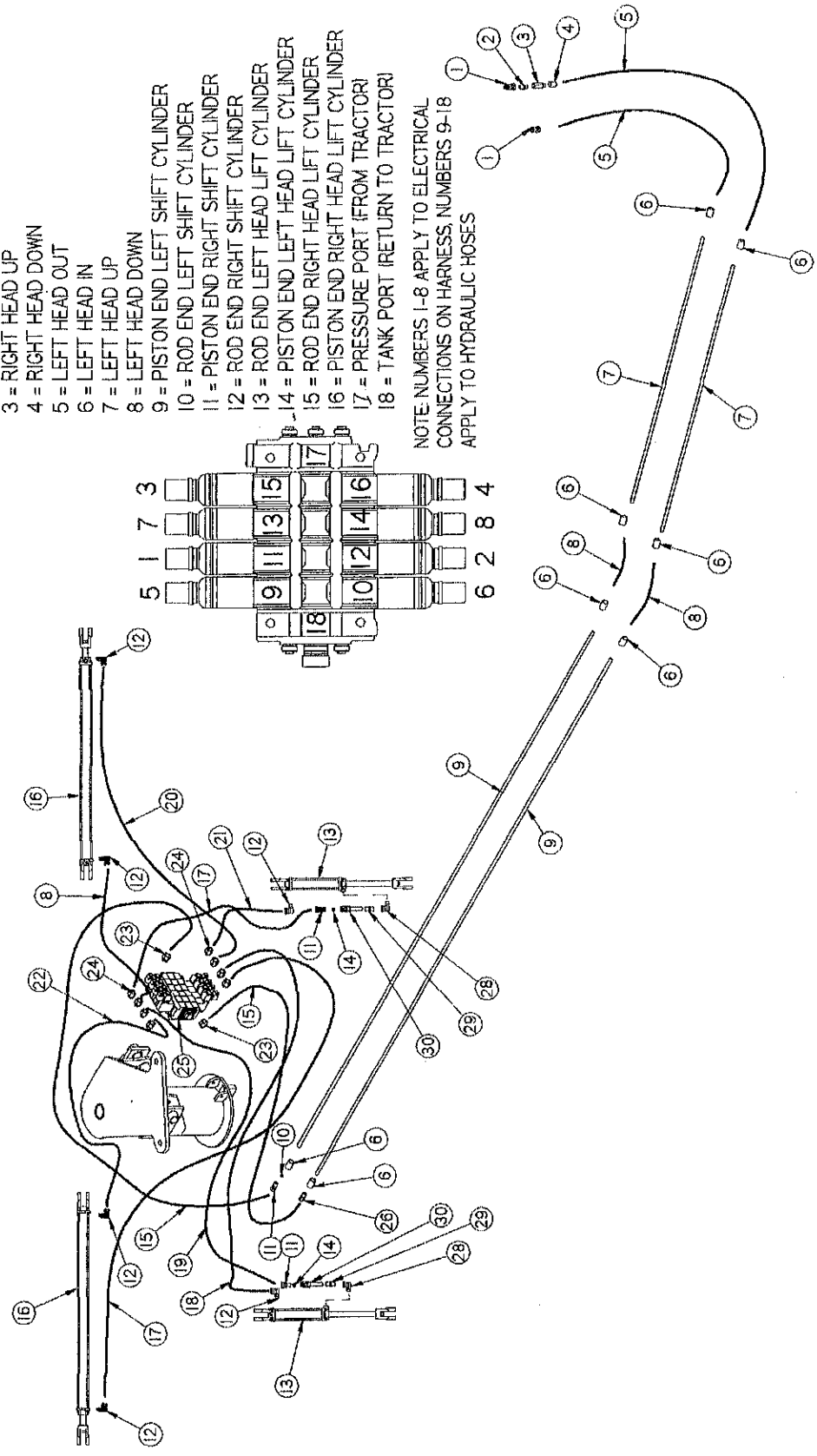


FIGURE 7
H&S 9' & 12' TWIN MERGER
POLE CIRCUIT HYDRAULICS

ITEM	PART NO.	DESCRIPTION
1.	DWM205	1/2" Quick Male Couplers
2.	DWM85	Hydraulic Hose 1/4" x 66" 3/8"MP & 1/2" MP
3.	HE60	3/8" Pipe Coupler
4.	DWM63	Short Pole Pipe
5.	DWM154	Hydraulic Hose 1/4" x 24" 3/8"MP & 3/8"MP
6.	DWM62	Long Pole Pipe
7.	DWM135	Orifice .094
8.	BFR122	3/8" Union Adapter
9.	DWM92	Hydraulic Hose 1/4" x 30" 3/8"MP & 3/8"MP
10.	WM141	1/2" Nipple Nut
11.	DWM406	3-1/2" x 30" Hydraulic Cylinder
12.	DWM415	1/2" 90° Swivel Adapter
13.	DWM428	Hydraulic Hose 1/2" x 55" 1/2"MP & 1/2"MP
14.	DWM429	Hydraulic Hose 1/2" x 22" 1/2"MP & 1/2"MP
15.	DWM414	Pole Locking and Relieving Valve
16.	DWM106	Hydraulic Hose 1/2" x 33" 1/2"MP & 1/2"MP

FIGURE 8

- 1 = RIGHT HEAD OUT
- 2 = RIGHT HEAD IN
- 3 = RIGHT HEAD UP
- 4 = RIGHT HEAD DOWN
- 5 = LEFT HEAD OUT
- 6 = LEFT HEAD IN
- 7 = LEFT HEAD UP
- 8 = LEFT HEAD DOWN
- 9 = PISTON END LEFT SHIFT CYLINDER
- 10 = ROD END LEFT SHIFT CYLINDER
- 11 = PISTON END RIGHT SHIFT CYLINDER
- 12 = ROD END RIGHT SHIFT CYLINDER
- 13 = ROD END LEFT HEAD LIFT CYLINDER
- 14 = PISTON END LEFT HEAD LIFT CYLINDER
- 15 = ROD END RIGHT HEAD LIFT CYLINDER
- 16 = PISTON END RIGHT HEAD LIFT CYLINDER
- 17 = PRESSURE PORT (FROM TRACTOR)
- 18 = TANK PORT (RETURN TO TRACTOR)



NOTE: NUMBERS 1-8 APPLY TO ELECTRICAL CONNECTIONS ON HARNESS, NUMBERS 9-18 APPLY TO HYDRAULIC HOSES

**FIGURE 8
H&S 9' TWIN MERGER
ELECTRIC HEAD HYDRAULICS**

ITEM	PART NO.	DESCRIPTION
1.	DWM205	1/2" Male Quick Coupler
2.	WM141	1/2" Nipple Nut
3.	DF18	1/2" Check Valve
4.	PB105	1/2" Coupler
5.	DWM85	Hydraulic Hose 1/4" x 66" 3/8"MP & 1/2"MP
6.	HE60	3/8" Pipe Coupler
7.	DWM63	Hydraulic Line
8.	DWM154	Hydraulic Hose 1/4" x 24" 3/8"MP & 3/8"MP
9.	DWM62	Hydraulic Line
10.	DWM135	Orifice .094
11.	BFR122	3/8" Union Adapter
12.	DWM110	3/8" Street Elbow w/90° Swivel
13.	BFR69A	Complete Hydraulic Cylinder
14.	DWM250	Orifice .042
15.	DWM88	Hydraulic Hose 1/4" x 60" 3/8"MP & 3/8"MP
16.	DWM152	Hydraulic Cylinder
17.	DWM89	Hydraulic Hose 1/4" x 78" 3/8"MP & 3/8"MP
18.	DWM381	Hydraulic Hose 1/4" x 90" 3/8"MP & #6SAE O-Ring 90°
19.	DWM382	Hydraulic Hose 1/4" x 96" 3/8"MP & #6SAE O-Ring 90°
20.	DWM156	Hydraulic Hose 1/4" x 56" 3/8"MP & 3/8"MP
21.	DWM383	Hydraulic Hose 1/4" x 66" 3/8"MP & #6SAE O-Ring 90°
22.	DWM155	Hydraulic Hose 1/4" x 38" 3/8"MP & 3/8"MP
23.	DWM269	3/4" Male O-Ring to 3/8" Pipe Union Adapter
24.	DWM268	9/16" Male O-Ring to 3/8" Pipe Union Adapter
25.	DWM388	Electric Solenoid Valve
26.	DWM233	3/8" Union Adapter
27.	DWM384	Hydraulic Hose 1/4" x 78" 3/8"MP & #6SAE O-Ring 90°
28.	23N234	3/8" Street Elbow
29.	16SV351	3/8" Nipple Nut
30.	16SV338	3/8" Ball Valve

FIGURE 9

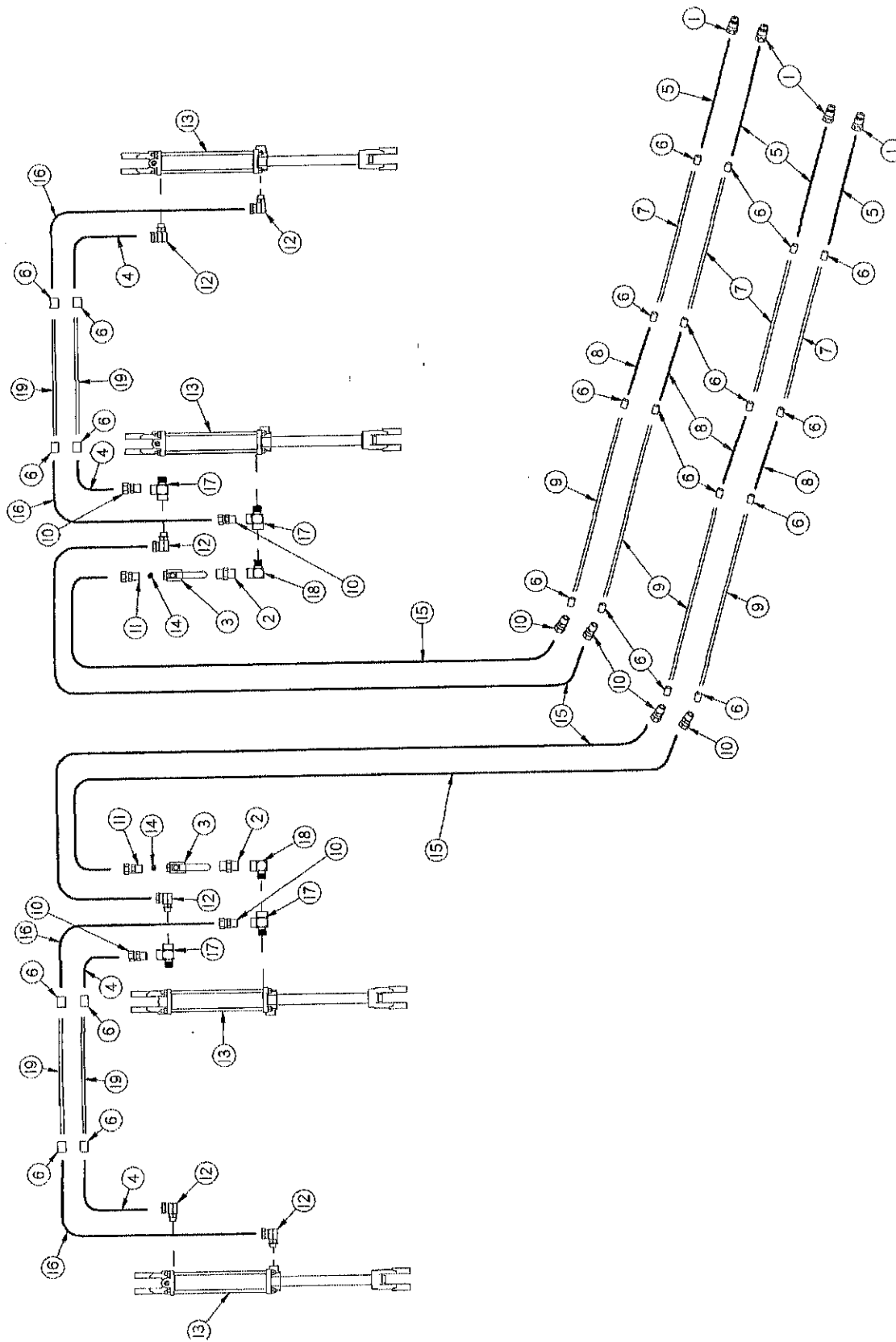


FIGURE 9
H&S 12' TWIN MERGER
HEAD HYDRAULICS

ITEM	PART NO.	DESCRIPTION
1.	DWM205	1/2" Male Quick Coupler
2.	16SV351	3/8" Nipple Nut
3.	16SV338	3/8" Ball Valve
4.	DWM92	Hydraulic Hose 1/4" x 30" 3/8"MP & 3/8"MP
5.	DWM85	Hydraulic Hose 1/4" x 66" 3/8"MP & 1/2"MP
6.	HE60	3/8" Pipe Coupler
7.	DWM63	Hydraulic Line
8.	DWM154	Hydraulic Hose 1/4" x 24" 3/8"MP & 3/8"MP
9.	DWM62	Hydraulic Line
10.	DWM233	3/8" Union Adapter
11.	BFR122	3/8" Adapter Union
12.	DWM110	3/8" Street Elbow w/90° Swivel
13.	BFR69A	Complete Hydraulic Cylinder
14.	BFR120	.062 Restrictor
15.	DWM88	Hydraulic Hose 1/4" x 60" 3/8"MP & 3/8"MP
16.	SHM15	Hydraulic Hose 1/4" x 40" 3/8"MP & 3/8"MP (5000 PSI)
17.	23N116	3/8" Street Tee
18.	23N234	3/8" Street Elbow
19.	DWM416	Head Lift Pipe

FIGURE 10

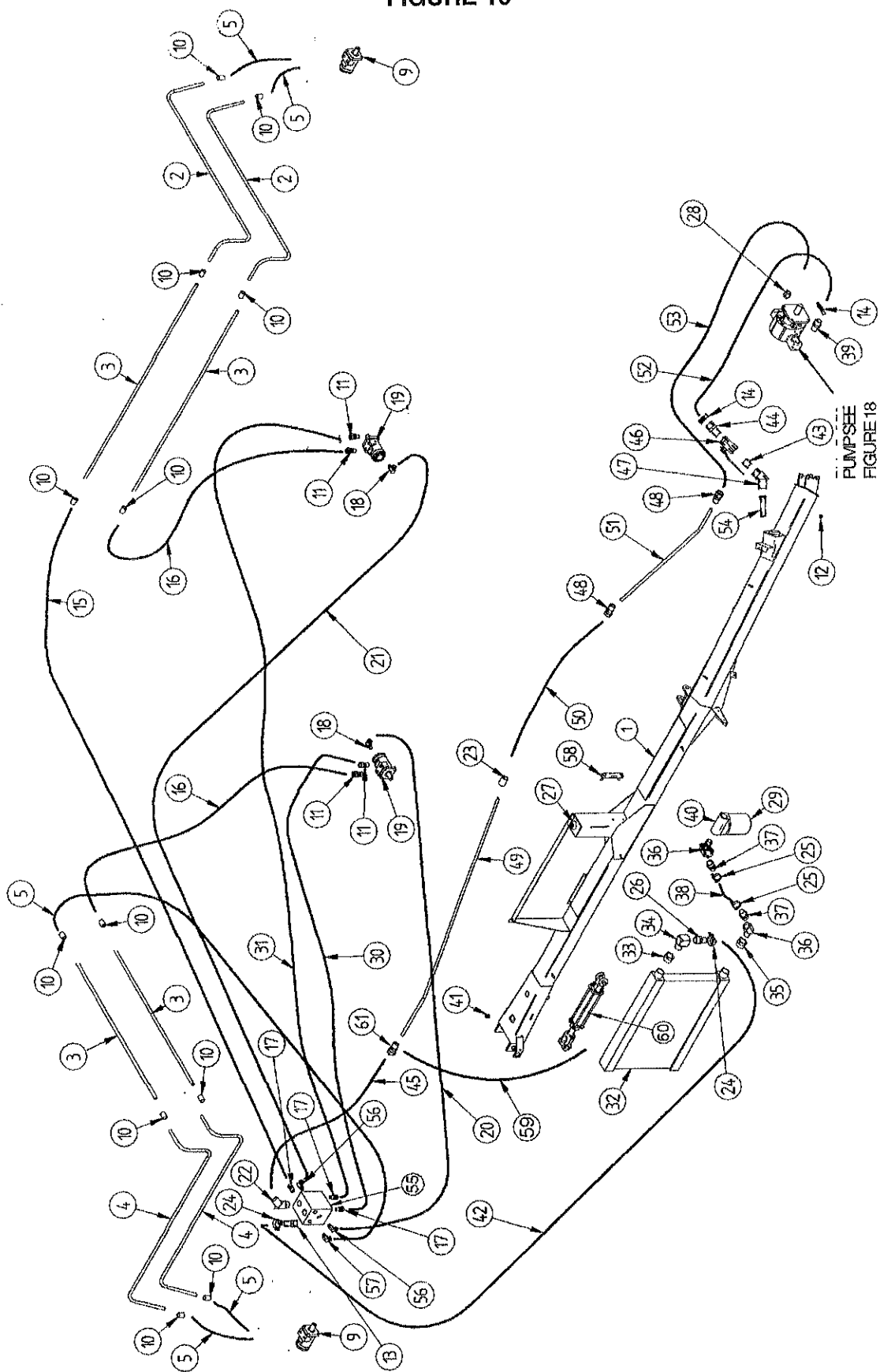


FIGURE 10
H&S 9' & 12' TWIN MERGER
MAIN FRAME HYDRAULICS

ITEM	PART NO.	DESCRIPTION	ITEM	PART NO.	DESCRIPTION
1.	DWM337	Pole Tank	31.	DWM100	Hyd. Hose 1/2"x77' 1/2"MP&1/2"MP
2.	DWM234	Motor Tubing A	**	DWM103	Hyd.Hose1/2"X40'1/2"MPX1/2"MP
3.	DWM235	Motor Pipe	32.	DWM78	Oil Cooler
4.	DWM236	Motor Tubing B	*	DWM319	Fan Assembly
5.	DWM102	Hyd. Hose 1/2"x25' 1/2"MP&1/2"MP	33.	DWM239	1-1/2" to 1" Bushing (Black Iron)
9.	DF1	Cross Conveyor Motor (101-2970)	34.	DWM240	1" Street Elbow (Black Iron)
*	WM225	Seal Kit	35.	DWM241	1-1/2" to 1-1/4" Bushing (Black Iron)
10.	PB105	1/2" Coupler (Black Iron)	36.	DWM242	1-1/4" 45° Street Elbow (Black Iron)
11.	LW174	1/2" Union Adapter	37.	DWM143	1-1/4" Hose Barb
12.	DWM159	3/4" Pipe Plug	38.	DWM95	Hydraulic Hose 1-1/4" x 10"
13.	DWM257	1" Hose Barb	39.	DWM260	Hose Barb
14.	DWM122	2" Hose Clamp	40.	DWM82	Filter Base
15.	DWM103	Hyd. Hose 1/2"x40' 1/2"MP&1/2"MP	41.	DWM261	1" Hex Socketed Pipe Plug
16.	DWM101	Hyd. Hose 1/2"x49' 1/2"MP&1/2"MP	42.	DWM96	Hydraulic Hose 1" x 148"
17.	DWM258	1"-16 O-Ring to 1/2" Pipe Union	43.	DWM147	2" Nipple Nut
18.	DWM119	7/16" to 3/8" 90°Pipe Union	44.	DWM144	2" Hose Barb
19.	DWM84	Pickup Motor (101-3048)	45.	DWM98	Hyd. Hose 1"x48' 1"MP&1"MP
*	WM225	Seal Kit	46.	DWM83	Ball Valve
20.	DWM108	Hyd. Hose 1/4"x56' 3/8"MP&1/2"MP	47.	DWM267	2" - 45° Elbow
**	SHM14	Hyd. Hose 1/4"x30' 3/8"MP&1/2"MP	48.	DWM109	1" Adapter Union
21.	DWM107	Hyd. Hose 1/4"x84' 3/8"MP&1/2"MP	49.	DWM64	1" x 161" Pipe
**	DWM108	Hyd.Hose1/4"X56'3/8"MPX1/2"MP	50.	DWM99	Hyd. Hose 1"x24' 1"MP&1"MP
22.	DWM413	45° Adapter	51.	DWM65	1" x 66" Pipe
23.	DWM146	1" Coupling	52.	DWM262	Suction Hose 2" x 50"
24.	DWM123	1" Hose Clamp	53.	DWM263	Two Wire Hyd. Hose 1" x 60"
25.	DWM138	1-1/4" Hose Clamp	54.	DWM80	2" Strainer
26.	DWM145	1" Hose Barb	55.	DWM264	Flow Divider
27.	DWM81	Strainer Filler	*	DWM401	Relief Valve Cartridge
28.	DWM259	1-5/8" O-Ring to 1" Pipe Connector	56.	DWM265	3/4" O-Ring to 3/8" Pipe 90° Adp.
29.	STM23	Filter	57.	DWM266	1-1/16" O-Ring to 1/2" Pipe Adp.
30.	DWM105	Hyd. Hose 1/2"x63' 1/2"MP&1/2"MP	58.	DWM204	Temp. & Oil Level Gauge
**	DWM102	Hyd. Hose 1/2"x25' 1/2"MP&1/2"MP	59.	DWM363	Hose 1/4" x 31.25"
			60.	T188A	Hydraulic Cylinder 2-1/2" x 8"
			61.	DWM365	1" Adapter Union w/Hole

NOTE: * (MEANS NOT SHOWN)
**** (12' TWIN MERGER ONLY)**

FIGURE 11

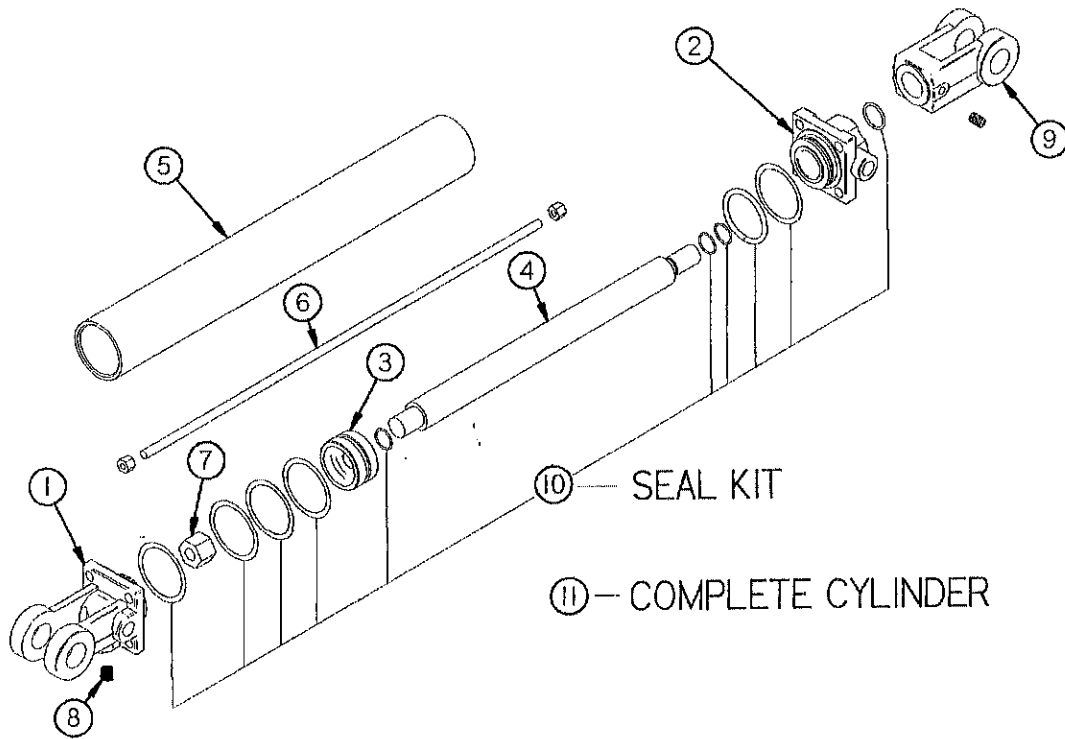


FIGURE 11
H&S 9' & 12' TWIN MERGER PICK-UP HEAD 2" x 8"
HYDRAULIC CYLINDER

ITEM	PART NO.	DESCRIPTION
1.	23N142A	Clevis Cap
2.	23N143A	Rod Cap
3.	23N144	Piston
4.	T134A	Rod
5.	BFR68	Cylinder Tube
6.	T186	Tie Rod
7.	23N148	Piston Nut
8.	23N149	Plug
9.	23N150A	Rod Clevis
10.	23N151	Seal Kit
11.	BFR69A	Complete Cylinder

FIGURE 12

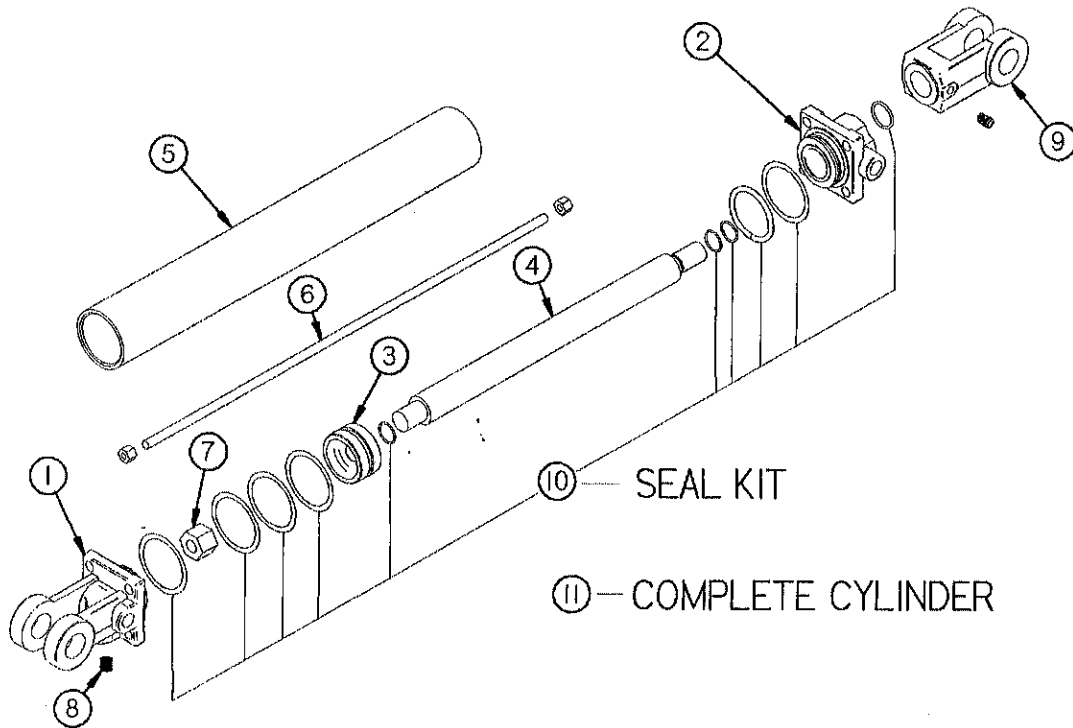


FIGURE 12
H&S 9' & 12' TWIN MERGER POLE 3-1/2" x 30"
HYDRAULIC CYLINDER

ITEM	PART NO.	DESCRIPTION
1.	DWM417	Clevis Cap
2.	DWM418	Rod Cap
3.	DWM419	Piston
4.	DWM420	Rod
5.	DWM421	Cylinder Tube
6.	DWM422	Tie Rod
7.	DWM423	Piston Nut
8.	DWM424	Plug
9.	DWM425	Rod Clevis
10.	DWM426	Seal Kit
11.	DWM406	Complete Cylinder

FIGURE 13

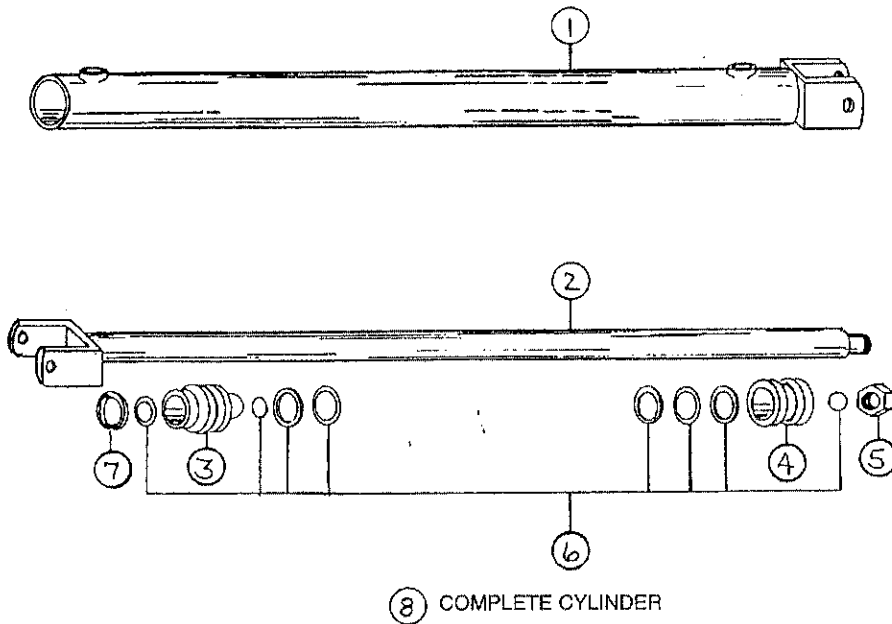


FIGURE 13
H&S 9' TWIN MERGER HEAD SHUTTLE 2" x 38"
HYDRAULIC CYLINDER

ITEM	PART NO.	DESCRIPTION
1.	DWM202	Case Weldment
2.	DWM203	Rod Weldment
3.	BFR330	Head Gland
4.	BFR331	Piston
5.	BFR332	Jam Nut
6.	BFR333	Seal Kit
7.	BFR334	Snap Ring
8.	DWM152	Complete Cylinder

FIGURE 14

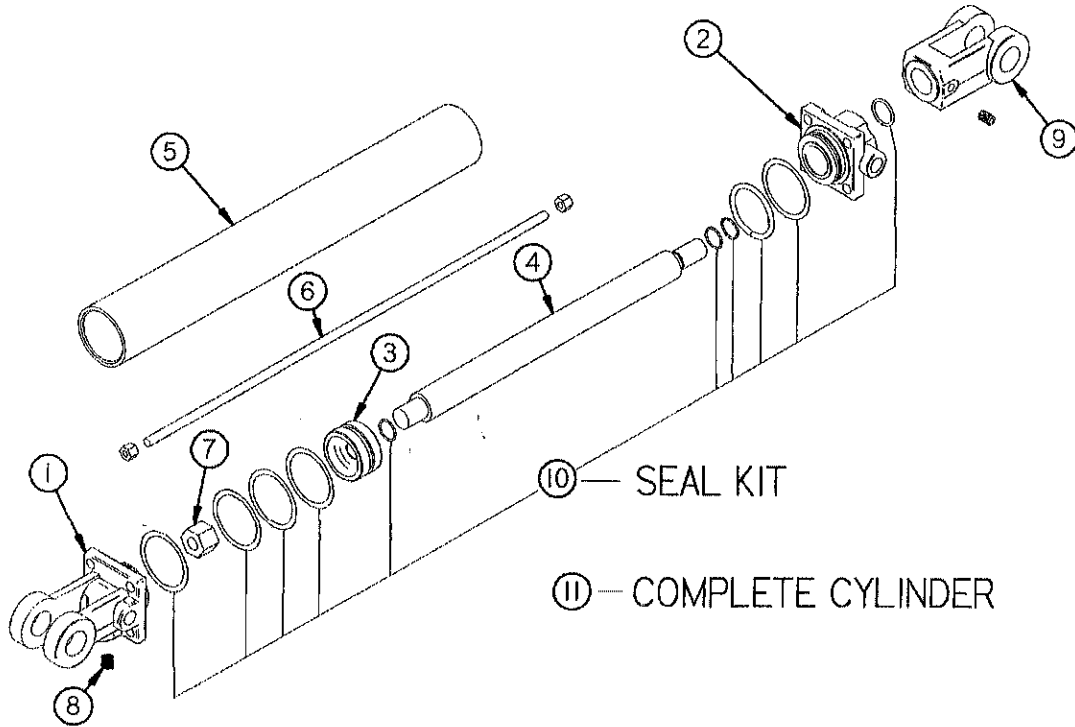


FIGURE 14
H&S 9' & 12' TWIN MERGER LOAD LEVELER 2-1/2" x 8"
HYDRAULIC CYLINDER

ITEM	PART NO.	DESCRIPTION
1.	T181A	Clevis Cap
2.	T182A	Rod Cap
3.	T183	Piston
4.	T184A	Rod
5.	T185	Cylinder Tube
6.	T186	Tie Rod
7.	23N148	Piston Nut
8.	23N149	Plug
9.	23N150A	Rod Clevis
10.	T187	Seal Kit
11.	T188A	Complete Cylinder

FIGURE 15

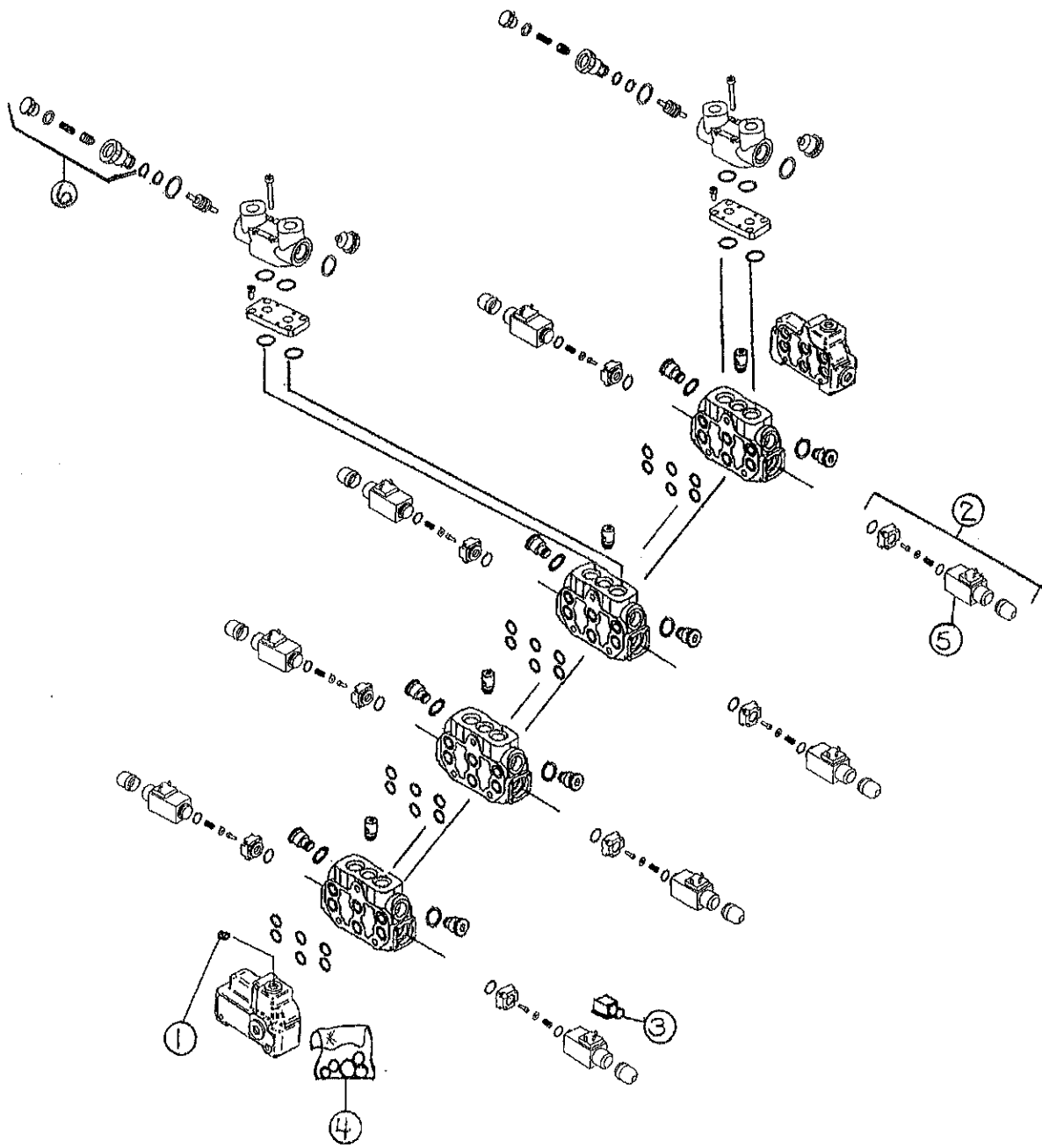
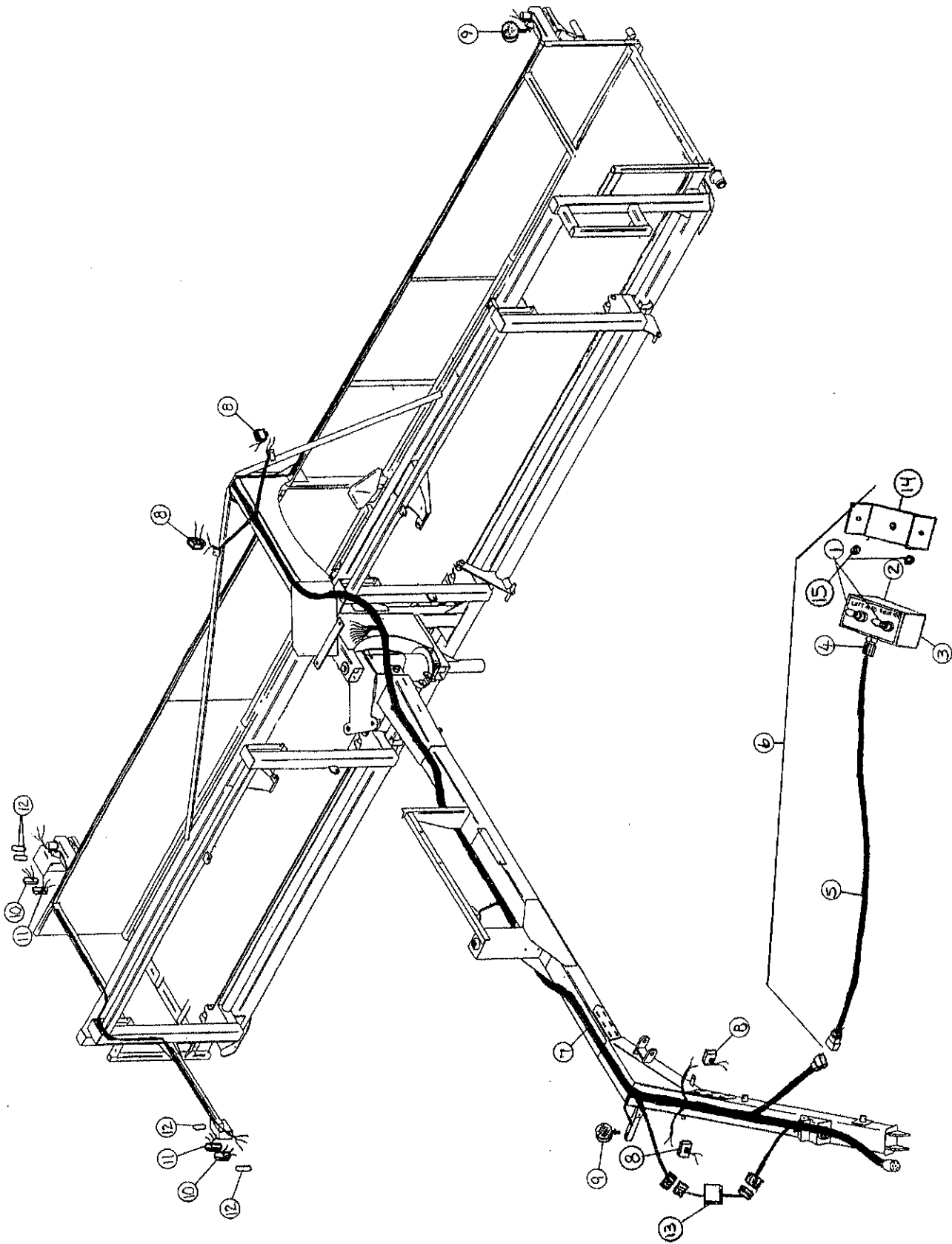


FIGURE 15
H&S 9' TWIN MERGER ELECTRIC/HYDRAULIC
VALVE BREAKDOWN

ITEM	PART NO.	DESCRIPTION
1.	DWM389	Close Center Plug
2.	DWM390	Solenoid Assembly
3.	DWM305	Din Connector
4.	DWM391	Seal Kit
5.	DWM392	Solenoid Block & Pin
6.	DWM393	Check Valve Repair Kit
*	DWM388	Complete Valve

NOTE: * (MEANS NOT SHOWN)

FIGURE 16



**FIGURE 16
H&S 9' & 12' TWIN MERGER
ELECTRIC WIRING HARNESS**

ITEM	9' HEAD	12' HEAD	DESCRIPTION
1.	DWM174	-	Joy Stick & Switch
2.	DWM139	-	Control Box Top
3.	DWM140	-	Control Box Bottom
4.	DWM175	-	Strained Relief (Cord Grip)
5.	DWM176	-	Cord
6.	DWM167	-	Complete Control Box
7.	DWM362	SHM16	Main Wiring Harness
8.	DWM130	"	Flood/Work Lights
9.	DWM129	"	Yellow Hazard Lights
10.	DWM131	"	Yellow Tail Lights
11.	S310	"	Red Tail Lights
12.	S308	"	Rubber Light Mount
13.	S441	"	Light Module
14.	DWM326	-	Control Box Yoke
15.	DWM327	-	Poly Washer
*	DWM406	-	Knob (2)
*	DWM404	-	Rubber Washer (2)

NOTE: - (MEANS NOT USED ON THIS MODEL)

" (MEANS SAME PART AS PREVIOUS MODEL)

*** (MEANS NOT SHOWN)**

FIGURE 17

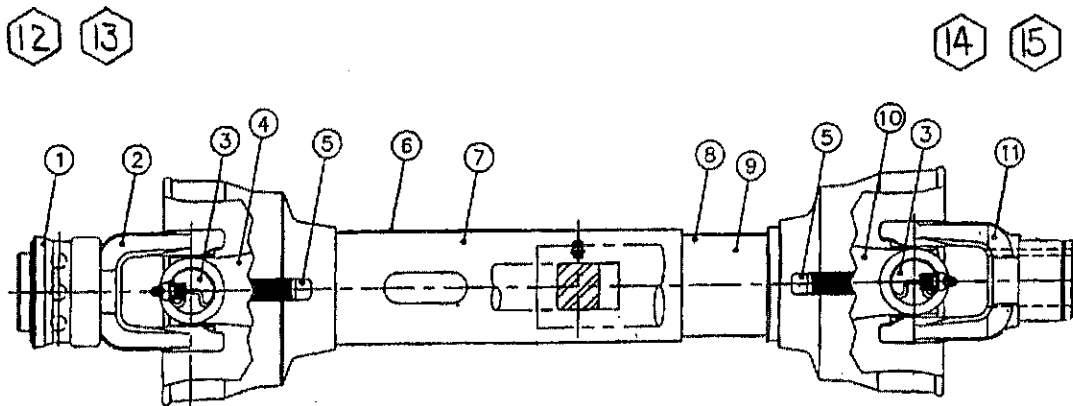
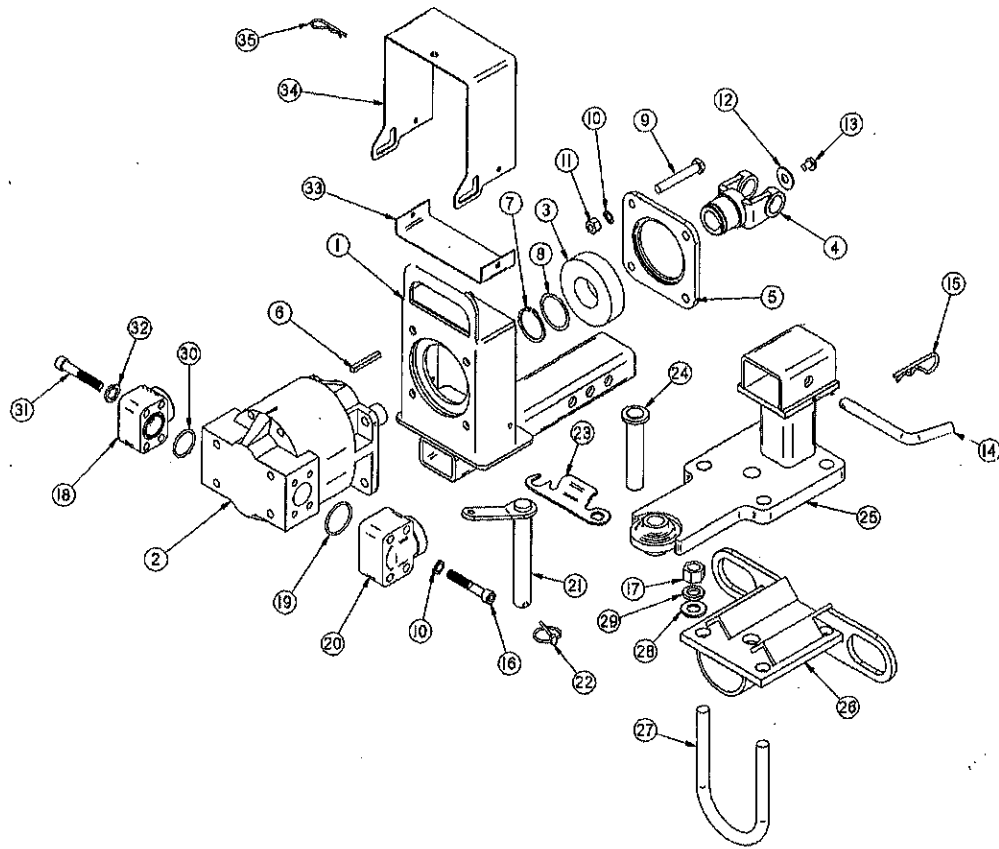


FIGURE 17
H&S 9' & 12' TWIN MERGER
PTO ASSEMBLY

ITEM	PART NO.	DESCRIPTION
1.	S225	Spring Lock Repair Kit
2.	37N73	Spring Lock Yoke Assembly #14121-1012
3.	14NW KIT	Cross & Bearing Kit (14R)
4.	DWM289	Yoke & Shaft
5.	4N20	Nylon Repair Kit
6.	DWM290	Safety Sign
7.	DWM291	Outer Guard
8.	DWM292	Inner Guard
9.	DWM293	Safety Sign (Not Shown)
10.	DWM294	Yoke, Tube & Slip Sleeve
11.	DWM295	Yoke
12.	DWM296	Joint & Shaft Half Assembly w/Guard
13.	DWM297	Joint & Shaft Half Assembly
14.	DWM298	Joint & Tube Half Assembly w/Guard
15.	DWM299	Joint & Tube Half Assembly
*	DWM300	Complete PTO

NOTE: * (MEANS NOT SHOWN)

FIGURE 18

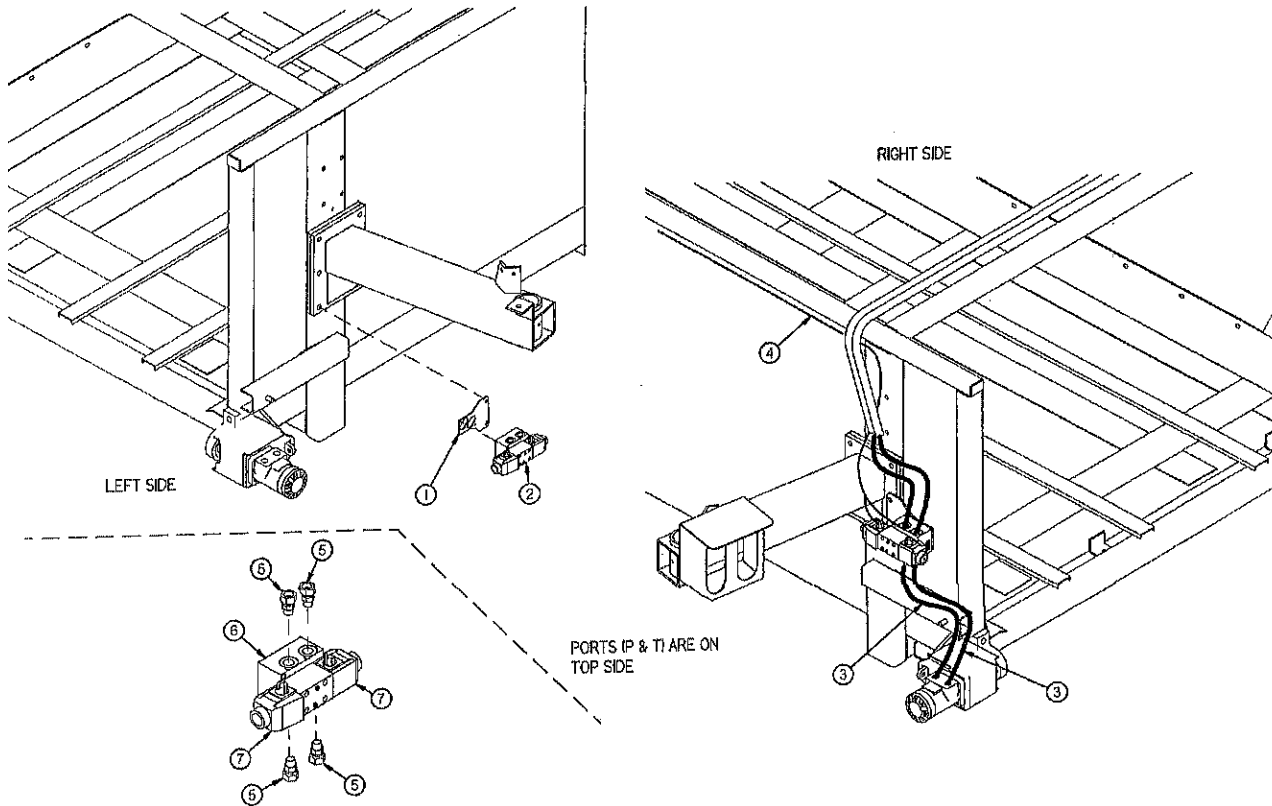


**FIGURE 18
H&S 9' & 12' TWIN MERGER
HITCH ASSEMBLY**

ITEM	PART NO.	DESCRIPTION	ITEM	PART NO.	DESCRIPTION
1.	DWM336	Receiver Pump Mount	18.	DWM283	Pressure L-Flange
2.	DWM276	PTO Pump	19.	DWM284	O-Ring
*	DWM302	Replacement Shaft Seal	20.	DWM285	Return L-Flange
3.	DWM277	Thrust Roller Bearing	21.	DWM273	Draw Pin
4.	DWM295	PTO Yoke (See Figure 17)	22.	F56	Clip Pin
5.	DWM278	Outside Bearing Housing	23.	DWM286	Drawbar Pin Lock
6.	DWM279	5/16"x2-1/4" Key (Round Edges)	24.	DWM274	Hitch Pin
7.	DWM280	Snap Ring 2"	25.	DWM271	Hitch Extension
8.	G92	Shim (As Needed)	26.	DWM272	Hitch Plate
9.	16SV91	1/2" x 3-1/4" Bolt GR. 5	27.	DWM287	U-Bolt (2)
10.	R35	1/2" Lock Washer	28.	DWM288	3/4" Flat Washer
11.	R29	1/2" Nut	29.	RG199	3/4" Lock Washer
12.	DWM320	1/2" Flat Washer	30.	DWM311	O-Ring
13.	DWM301	Bolt - Metric	31.	DWM312	7/16" Socket Head Cap Screw
14.	10WR14	5" Bent Pin	32.	DWM313	7/16" Lock Washer
15.	DWM310	Hair Pin	33.	DWM330	Lower PTO Shield
16.	DWM281	1/2" Socket Head Cap Screw	34.	DWM329	Upper PTO Shield
17.	DWM282	3/4" Nut	35.	X97	Hair Pin

NOTE: * (MEANS NOT SHOWN)

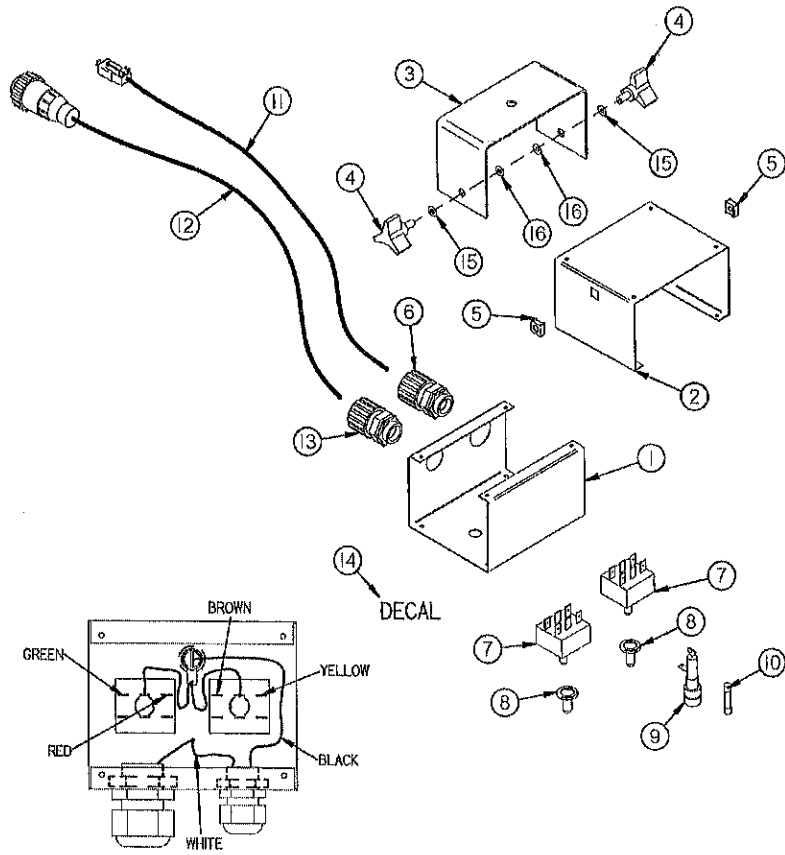
FIGURE 19



**FIGURE 19
H&S 9' & 12' TWIN MERGER
VALVE MOUNTING**

ITEM	PART NO.	DESCRIPTION
1.	DWM450	Conveyor Reverse Bracket
2.	DWM446	Valve (Complete)
3.	DWM104	Hydraulic Hose 1/2" X 19" - 1/2 MP X 1/2" MP
4.	DWM445	Wiring Harness
5.	DWM454	Union Adapter (6900-8-8)
6.	DWM457	Valve Base
7.	DWM458	Coil

FIGURE 20



**FIGURE 20
H&S 9' & 12' TWIN MERGER
CROSS CONVEYOR CONTROL BOX**

ITEM	PART NO.	DESCRIPTION
1.	DWM447	Control Box Top
2.	DWM448	Control Box Bottom
3.	DWM449	Control Box Mount
4.	HD174	Knob
5.	HD173	Panel Nut
6.	DWM455	Strain Relief
7.	DWM453	Switch (Hesitation)
8.	16SV235	Switch Boot
9.	16SV231	Fuse Holder
10.	DWM456	Fuse (15 Amp)
11.	DWM444	Implement Cord
12.	16SV271	Power Cord
13.	16SV316	Strain Relief (Cord Grip)
14.	120406	Decal
15.	DWM327	Poly Washer
16.	DWM404	Rubber Washer
*	DWM452	Complete Cross/Reverse Box

NOTE: * (MEANS NOT SHOWN)

FIGURE 21

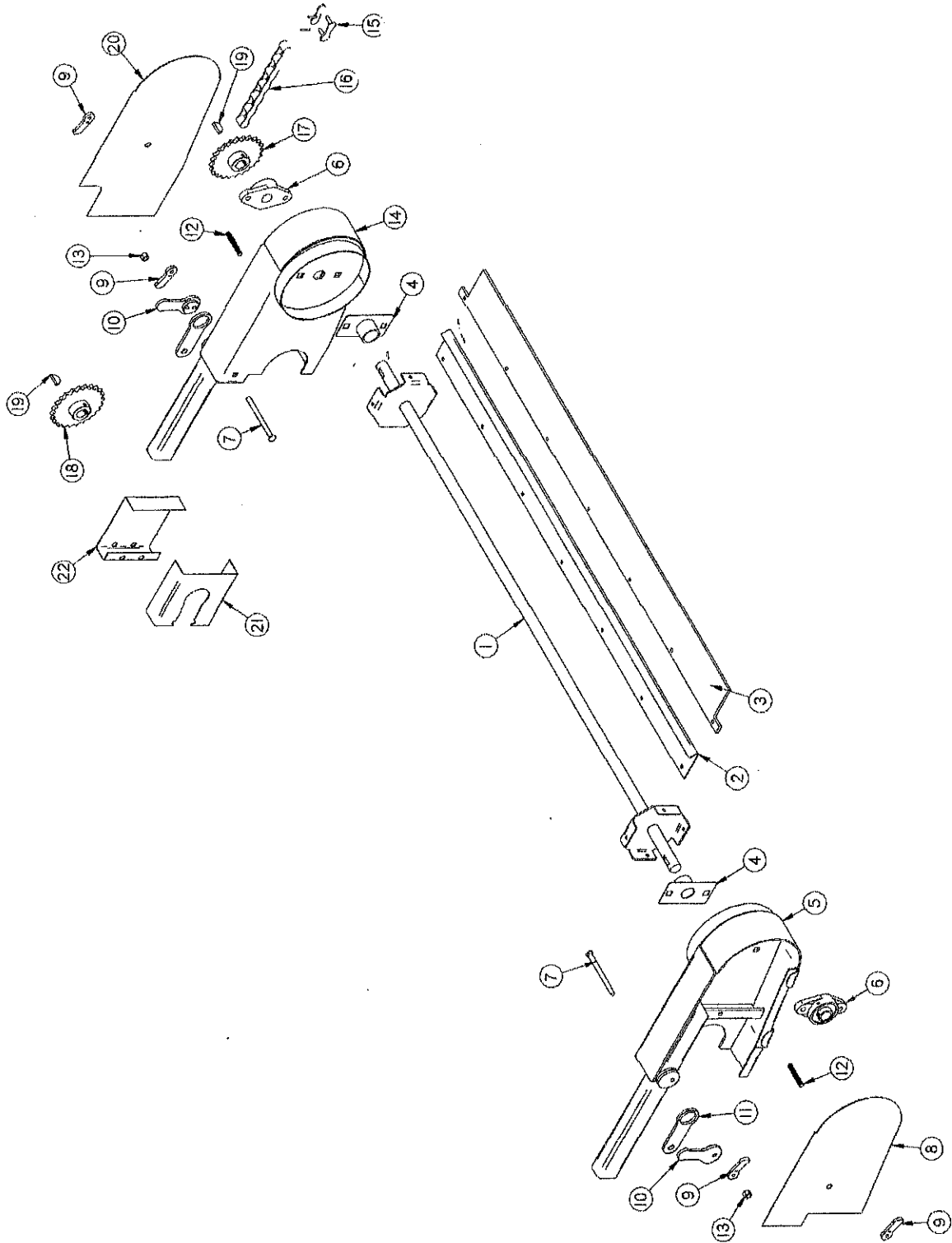


FIGURE 21
H&S 9' & 12' TWIN MERGER
OPTIONAL ACCELERATOR

ITEM	PART NO.	DESCRIPTION
1.	DWM207	Accelerator Shaft
2.	DWM212	Accelerator Plate
3.	DWM220	Rubber
4.	DWM211	Wrap Guard
5.	DWM208	Mounting Bracket (1)
6.	DWM221	1" Bearing
7.	DWM222	3/8" x 5-1/2" Carriage Bolt GR. 2
8.	DWM214	Shield (1)
9.	DWM219	Handle Nut
10.	DWM210	Latch Handle
11.	DWM217	Latch
12.	DWM218	Ready Rod
13.	A14	3/8" Nylock Nut
14.	DWM209	Mounting Bracket (2)
15.	X61	#50 Connector Link
16.	SWM53	#50 Roller Chain (57 Pitches)
17.	X106	Sprocket 24T 1" Bore
18.	SWM45	Sprocket 17T 1-1/4" Bore
19.	5B10	1/4" x 1" Woodruff Key
20.	DWM213	Shield
21.	DWM216	Sprocket Shield Back
22.	DWM215	Sprocket Shield
23.	S135	1/4" x 1-1/4" Square Key
*	DWM323	Complete Accelerator Kit

NOTE: * (MEANS NOT SHOWN)

NOTE: RIGHT HAND DRIVE SHOWN

FIGURE 22

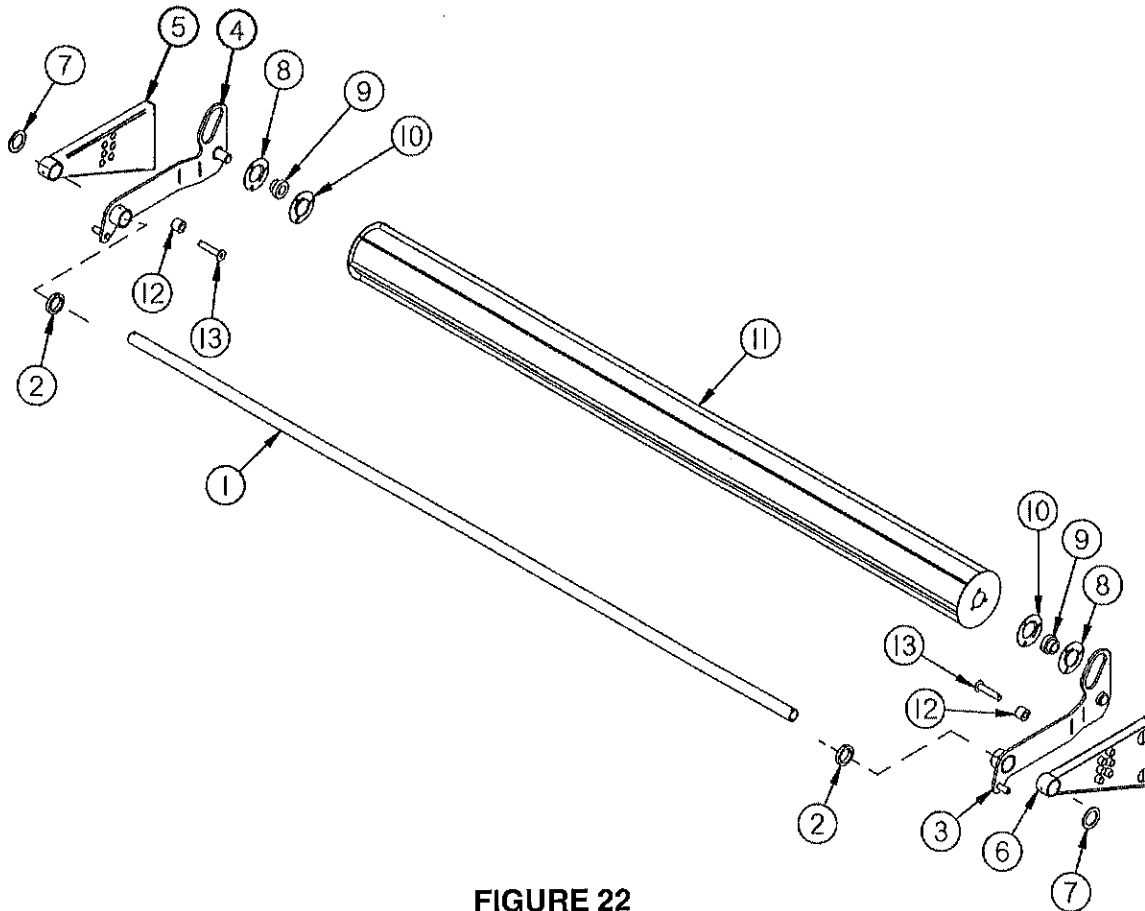


FIGURE 22
H&S TWIN MERGER 9' & 12' CROP ROLLER

ITEM	9'	12'	DESCRIPTION
1.	WM357	WM346	Front Support
2.	WM347	"	Collar
3.	WM348	"	Left Arm
4.	WM349	"	Right Arm
5.	WM350	"	Right Bracket
6.	WM351	"	Left Bracket
7.	DWM227	"	Wind Guard Washer
8.	F114A	"	Bearing Flange(45° Zerk)
9.	F115	"	1-1/4" Bearing
*	F16	"	1-1/4" Lock Collar
10.	F14	"	Bearing Flange
11.	WM356	WM352	Crop Roller
12.	WM353	"	Poly Bumper
13.	WM354	"	Adjustment Pin

NOTE: *(MEANS NOT SHOWN)

